

Edge Hill, Wimbledon, SW19

£640,000

🛏️ 2 🚿 1 🛋️ 1

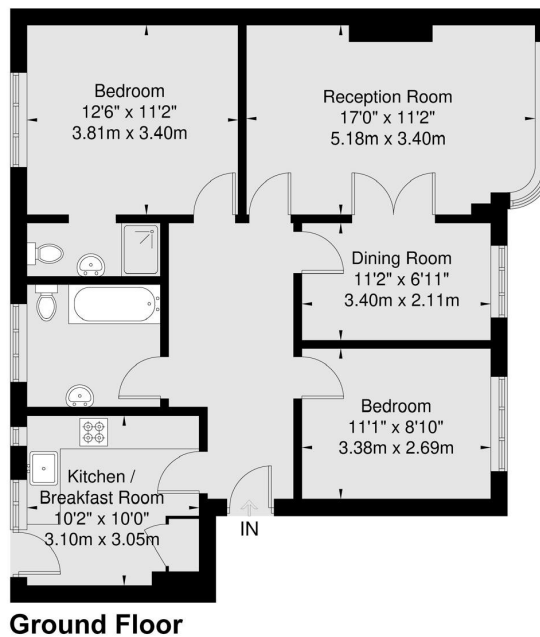


Stunning two/three bedroom ground floor apartment (840 Sq.Ft) set within a sought after Art Deco development close to excellent transport links and amenities in nearby Wimbledon and Wimbledon Village. The property, offered to the market with no onward chain, has been beautifully appointed throughout, offering bright and spacious, versatile accommodation with stylish interiors and neutral finish, as well as access to stunning communal gardens. Features include a light and airy reception room with adjoining dining room (or third bedroom), separate well equipped kitchen, modern bathroom, further en-suite, gas central heating, double glazing, and attractive stripped wood flooring.

Key Features

- Stunning Two/Three Bedroom Ground Floor Apartment (840 Sq.Ft)
- Stylish Interiors and Neutral Finish
- Separate Well Equipped Kitchen
- Superb Communal Gardens
- Close to Wimbledon Station, Town Centre and Fashionable Amenities
- Sought After Wimbledon Development
- One/Two Bright and Spacious Reception Rooms
- Modern Bathroom and En-Suite
- No Chain
- Property Ref: DA 0587

Edge Hill Court
Approx Gross Internal Area
Ground Floor = 78.1 Sq m / 840 Sq Ft



Viewmedia © 2024
Viewmedia.co.uk

Whilst every attempt has been made to ensure the accuracy of this floor plan, measurements of doors, windows and rooms are approximate and no responsibility is taken for any error or omission. This illustration is for identification purpose only. Measured and drawn accordance with RICS guidelines. Not drawn to scale, unless stated. Dimensions shown are to the nearest 3" and are to the points indicated by the arrow heads.