





GUY DALY POWERED BY **exp**TM UK

Squire Gardens, St Johns Wood Road, St Johns Wood, NW8
£8,000PCM (Deposit: £9,230)

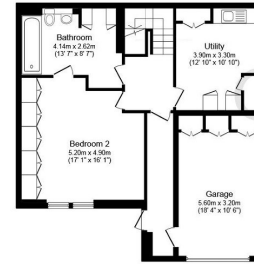
 3  3  1



Tax Band: H Furnished: Furnished optional

If You're Looking For A Safe & Secure Family Home You'll Be Bowled Over By This Luxurious NW8 Mews That's Just A Stone's Throw From Lord's. Situated within a gated private square overlooking a tranquil central fountain, there's even a 24h concierge.

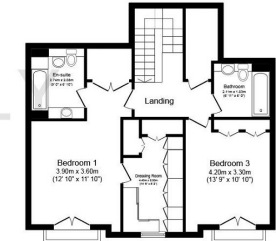




Lower Ground Floor



Ground Floor



First Floor

Total floor area 218.2 sq.m. (2,348 sq.ft.) approx

This plan is for illustration purposes only and may not be representative of the property. Plan not to scale. Powered by PropertyBox

