

Heights Close, West Wimbledon, SW20

Guide Price £1,275,000

7 2 2



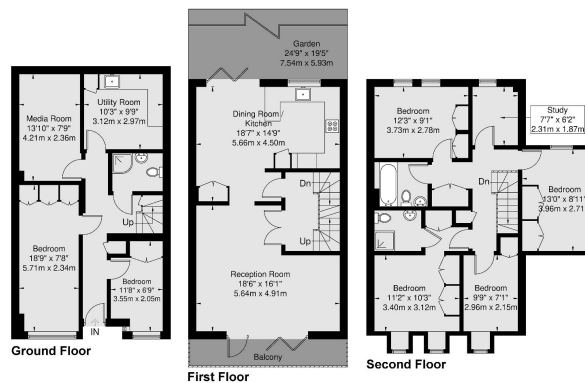
Beautifully presented six/seven bedroom end of terrace family home (1,841 Sq.Ft) with off street parking and private patio garden, enviably situated in a quiet and sought after cul-de-sac location. The property has been superbly maintained and appointed, offering bright and spacious, versatile accommodation over three floors, blending comfort and convenience - ideal for a busy modern lifestyle. Features include a stunning reception room opening onto a full width balcony, well equipped luxury fitted kitchen/diner, ground floor media room, utility and shower, second floor family bathroom and principal bedroom en-suite, gas central heating, double glazing, ample inbuilt storage, quality floor coverings, and neutral décor.

Key Features

- Beautifully Presented Six/Seven Bedroom End of Terrace House (1,841 Sq.Ft)
- Stunning Versatile Accommodation Over Three Floors
- Well Equipped Quality Fitted Kitchen/ Diner
- Bonus Media Room and Utility
- Close to Transport Links and Amenities
- Sought After Cul-De-Sac Location
- Superb Reception Opening onto Balcony
- Three Bath/Shower Rooms (One En-Suite)
- Low Maintenance Garden and Off Street Parking
- Property Ref: DA0587

Heights Close

Approx Gross Internal Area = 171.1 Sq m / 1841 Sq Ft



Viewmedia © 2024
Viewmedia.co.uk

Whilst every attempt has been made to ensure the accuracy of this floor plan, measurements of doors, windows and rooms are approximate and no responsibility is taken for any error or omission. This illustration is for identification purpose only. Measured and drawn accordance with RICS guidelines. Not drawn to scale, unless stated. Dimensions shown are to the nearest 3" and are to the points indicated by the arrow heads.