



DANIEL ARCHER

exp[®] UK

@ daniel.archer@exp.uk.com

🌐 danielarcher.exp.uk.com

☎ 07792 947 756

Amity Grove, West Wimbledon, SW20

£1,350,000

🛏️ 3 🚿 2 🚗 2

- Stunning Three Double Bedroom Detached House (1,381 Sq.Ft)
- Superbly presented Interior Finish
- Separate Well Equipped Kitchen
- Gorgeous Landscaped Garden with Garden Room/ Home Office
- Close to Raynes Park Station, Holland Gardens, Schools and Amenities
- Sought After West Wimbledon Location
- Two Elegant Reception Rooms
- Luxury Family Bathroom, En-Suite Shower room and further Separate WC.
- Off Street Parking
- Property Ref: DA 0587 Scope to extend further subject to consents.

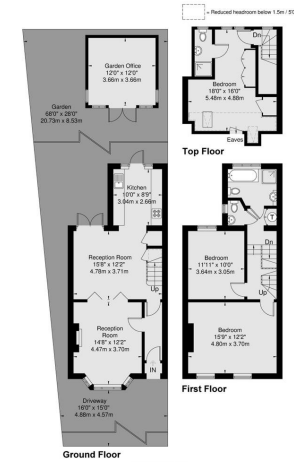


Rare detached house, stunning three double bedroom period detached family home (1,381 Sq. Ft) with two bath/shower rooms and a separate wc, featuring a glorious mature garden with fully equipped garden room/home office and off street parking, ideally situated close to Holland Gardens and moments from Raynes Park station, High Street amenities, coffee shops and restaurants. Offering extended accommodation blending comfort and style, with superb finish throughout. *Video viewing* click virtual tour tab. Property Ref: DA0587





Amity Grove
 Approx Gross Internal Area = 115.1 Sq m / 1238 Sq Ft
 Garden Office = 13.3 Sq m / 143 Sq Ft
 Total = 128.4 Sq m / 1381 Sq Ft



Viewmedia © 2024
 Viewmedia.co.uk
 Whilst every attempt has been made to ensure the accuracy of the floor plan, measurements of doors, windows and rooms are approximate and no responsibility is taken for any error or omission. This illustration is for identification purposes only. Measured and drawn accordance with PAS 20 guidelines. Not drawn to scale, unless stated. Dimensions shown are to the nearest 1/2" and are to be given as indicated by the arrow heads.

