



EUAN WILLIAMS

exp[®] UK

@ euan.williams@exp.uk.com

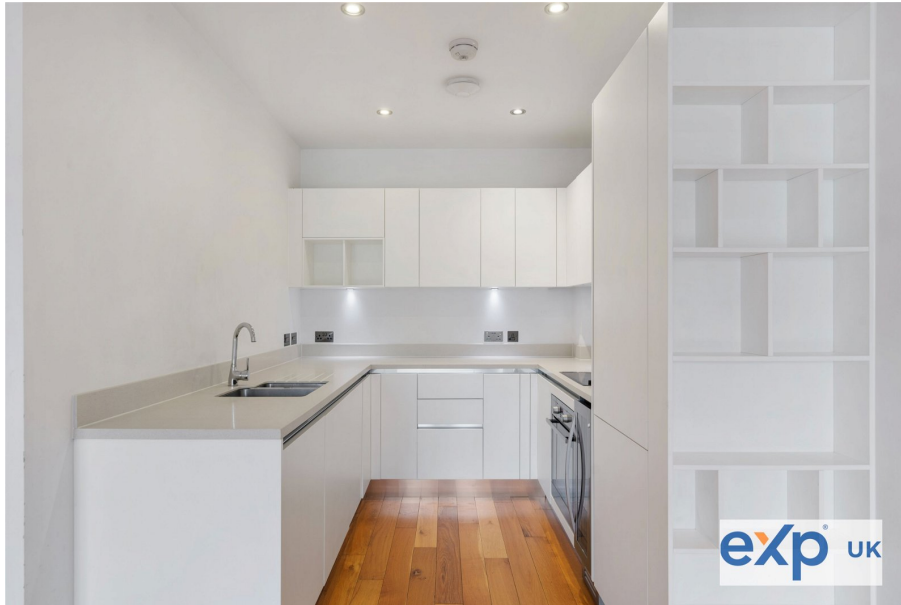
🌐 euanwilliams.exp.uk.com

☎ 07855 219 488

Finchley Road , London, NW3 7AJ

Guide Price £895,000

🛏️ 2 🚿 2 🛋️ 1



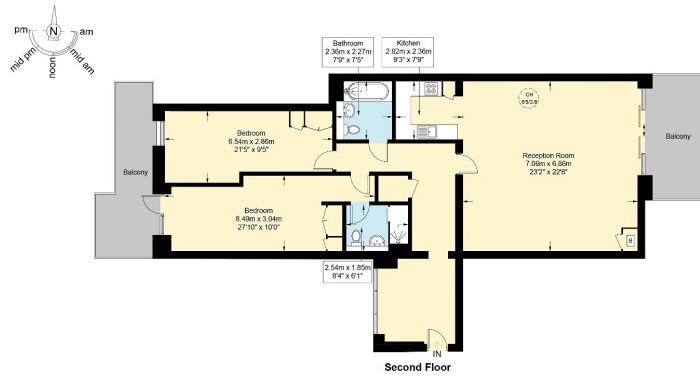
Quote Ref: EW0808. The apartment is positioned on the second floor (with a lift) and benefits from having wood flooring and an abundance of natural light throughout. The principal bedroom benefits from having an en suite bathroom, fitted wardrobes, and a private balcony. There is a further double bedroom with fitted wardrobes, an additional modern family bathroom, a fully integrated kitchen fitted with modern appliances, and a reception room that leads directly onto a private balcony overlooking the communal gardens.

The Cascades is a modern development that sits on the cusp of Hampstead, West Hampstead, and Golders Green. Finchley Road has excellent bus links into Central London, while West Hampstead offers several rail and tube links.



The Cascades, NW3

Approximate Gross Internal Area = 1434 sq ft / 133.2 sq m



- Two bedrooms
- Two bathrooms
- Open-plan kitchen
- Reception room
- Two balconies
- Communal gardens
- Quote Ref: EW0808



This plan is for layout guidance only and is not drawn to scale unless stated. All dimensions, including windows, doors, and the Total Gross Internal Area (GIA), are approximate. For precise measurements, please consult a qualified architect or surveyor before making any decisions based on this plan.

