



DANIEL ARCHER

exp<sup>®</sup> UK

@ daniel.archer@exp.uk.com

🌐 danielarcher.exp.uk.com

☎ 07792 947 756

## Southdown Road, London, SW20 8PT

£600,000

🛏️ 2 🪑 2 🚗 1

- 1160 SQFT
- Own front door
- Split level
- Two double bedrooms
- Two en-suite bathrooms
- Modern Kitchen
- Direct access to garden area (not demised)
- Share of freehold
- No onward chain
- Furniture included if required



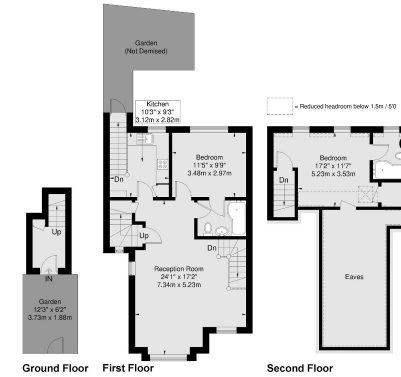
A super impressive two bedroom maisonette providing over 1100 SQFT of accommodation.





**Southdown Road**

Approx Gross Internal Area  
 Ground Floor = 4.6 Sq m / 49 Sq Ft  
 First Floor = 50.3 Sq m / 534 Sq Ft  
 Second Floor = 44.3 Sq m / 477 Sq Ft  
 Total = 107.8 Sq m / 1160 Sq Ft



Viewmedia © 2024

Viewmedia.co.uk  
 Whilst every effort has been made to ensure the accuracy of the floor plan, measurements of doors, windows and rooms are approximate and no responsibility is taken for any error or omission. This illustration is for identification purposes only. Measured and drawn according to RICS guidelines. Not drawn to scale, unless stated. Dimensions shown are to the nearest 2" and are to be treated as the guide indicated by the arrow heads.

