



NIA ABRISHAMI

exp[®] UK

@ nia.abrighami@exp.uk.com

🌐 niaabrighami.exp.uk.com

☎ 07462 936 631

Goldhurst Terrace, South Hampstead, NW6

£995,000

🛏️ 2 🪑 2 🚗 1



Property reference number: MA0672

Introducing a beautiful freehold mews house in South Hampstead NW6 with two bedrooms and a stylish "loft-style" design. It's in a great location near shops, restaurants, and transportation.

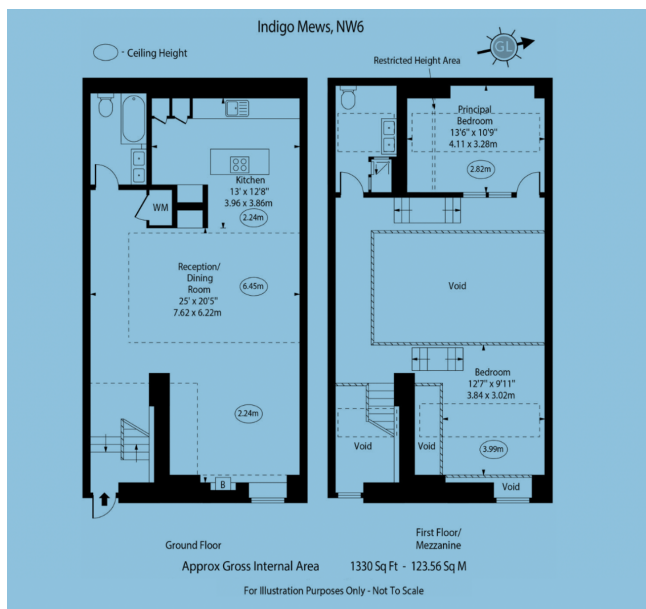
The property has two bathrooms, both with twin sinks. The spectacular living space spans 25' x 20'5". The living space is truly remarkable, and features a mezzanine area.

Indigo Mews is on Goldhurst Terrace, a top road in South Hampstead. You'll find plenty of shops and restaurants, like Waitrose and Marks & Spencer, just 0.2 miles away on Finchley Road.

For travel, Finchley Road Underground (Jubilee Line) is only 0.3 miles away, and South Hampstead Overground is just 0.2 miles away. You'll also have local amenities at Fairhazel Gardens within 500 feet.

Get in touch for more information!





- Unique "loft-style" mews house
- Family bathroom
- High ceilings
- 0.2 miles from the Jubilee Line
- Two double bedrooms
- Shower room with double sink
- Spacious living space

