

Coda Residence, York Place, Battersea, SW11

£600,000

1 1 1



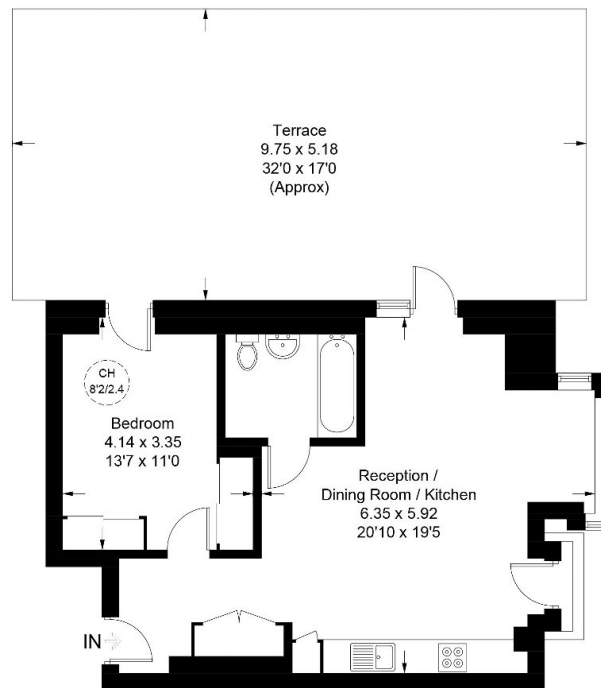
PLEASE QUOTE JW0326 - Truly magnificent one bedroom sixth floor apartment (551Sq.Ft) with incredible roof terrace that is larger than the apartment itself, ideal for al fresco entertaining, with impressive London skyline views. Superbly finished and immaculately presented, the property offers luxury living space in a highly sought after location, with flowing open plan living space providing the perfect blend of comfort, convenience and modern design. Features include a fully equipped kitchen with quality 'Siemens' appliances and solid work surfaces, stylish bathroom with elegant tiling, wooden floors with underfloor heating, comfort cooling, ample bespoke inbuilt storage and neutral decor. The development itself benefits from a residents gym, residents lounges and co-working areas, concierge, and landscaped communal gardens.

Key Features

- STUNNING 1 BED SIXTH FLOOR APARTMENT (551 SQ.FT)
- SOUGHT AFTER RIVERSIDE DEVELOPMENT
- STYLISH INTERIORS AND HIGH QUALITY DESIGN
- OPEN PLAN RECEPTION/QUALITY FITTED KITCHEN
- LUXURY BATHROOM
- ENORMOUS PRIVATE TERRACE
- CONCIERGE SERVICE AND RESIDENTS LOUNGE AREAS
- RESIDENTS GYM
- MOMENTS FROM CLAPHAM JUNCTION STATION
- PLEASE QUOTE JW0326

York Place

Approximate Gross Internal Area = 51.2 sq m / 551 sq ft



Sixth Floor

Illustration for identification purposes only, not for valuation purposes, measurements are approximate, not to scale.