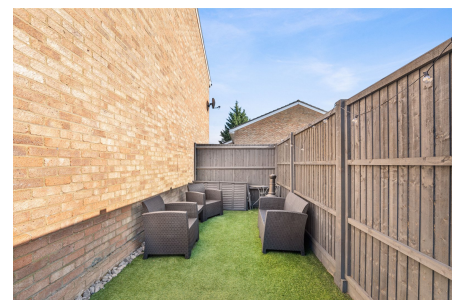


Middlefields, Croydon, CR0 9LJ

Guide Price £400,000

3 1 1



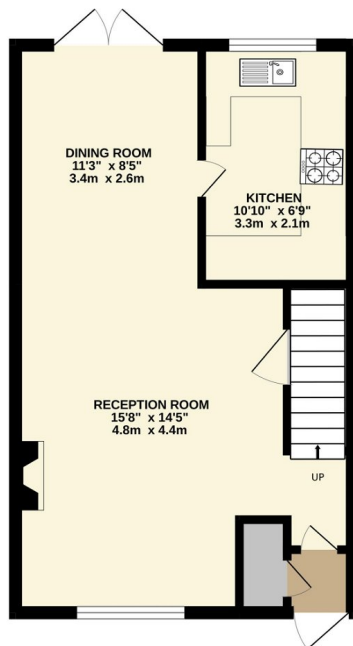
Guide Price £400,000 to £425,000

This lovely, end of terrace home in Forestdale is a rare find, it boasts a larger than normal garden, spacious, open/plan, downstairs space, quiet location and the added bonus being just a 10 minute walk to transport links and other amenities.

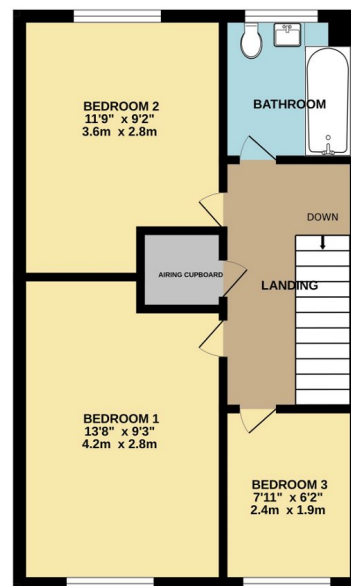
Key Features

- 3 Bedrooms
- End of terrace
- Garage
- Large garden
- West facing garden
- Quiet location
- Close to bus routes
- Close to good primary schools
- Close to nice parks
- EPC rating D

GROUND FLOOR
389 sq.ft. (36.1 sq.m.) approx.



1ST FLOOR
390 sq.ft. (36.2 sq.m.) approx.



TOTAL FLOOR AREA: 779 sq.ft. (72.4 sq.m.) approx.

Whilst every attempt has been made to ensure the accuracy of the floorplan contained here, measurements of doors, windows, rooms and any other items are approximate and no responsibility is taken for any error, omission or mis-statement. This plan is for illustrative purposes only and should be used as such by any prospective purchaser. The services, systems and appliances shown have not been tested and no guarantee as to their operability or efficiency can be given.
Made with Metropix ©2024