

Wyke Road, Raynes Park, SW20

£300,000

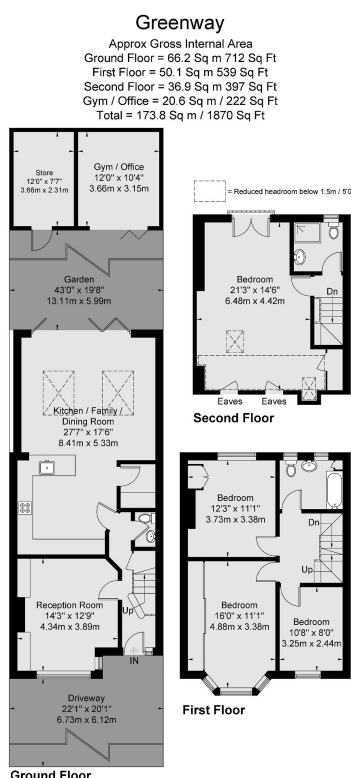
1 1 1



Beautifully presented one double bedroom second floor apartment (500 Sq.Ft), set within a sought after 'Art Deco' mansion block, superbly situated moments from Raynes Park station and amenities. The property has been well maintained by the current owners, offering bright and spacious, characterful accommodation with stylish interiors, neutral decor, and quality finish throughout - ideal for first time purchaser or investor alike. Features include a large reception room, separate well equipped metro-tiled kitchen, modern shower room, gas central heating, quality floor coverings, and useful inbuilt storage. The development further benefits from well maintained communal areas and surrounding gardens.

Key Features

- Well Presented One Bedroom Second Floor Apartment (500 Sq.Ft)
- Ideal Raynes Park Location
- Bright and Spacious Reception Room
- Shower Room
- Close to Raynes Park Station and Amenities
- Sought After 'Art Deco' Mansion Block
- Characterful Accommodation with Stylish Interiors
- Separate Well Equipped Kitchen
- Communal Gardens
- Property Ref: DA 0587AA



Viewmedia © 2023
 Viewmedia.co.uk

Whilst every attempt has been made to ensure the accuracy of this floor plan, measurements of doors, windows and rooms are approximate and no responsibility is taken for any error or omission. This illustration is for identification purpose only. Measured and drawn accordance with RICS guidelines. Not drawn to scale, unless stated. Dimensions shown are to the nearest 3" and are to the points indicated by the arrow heads.