

**Wise Road, Stratford, E15**

Offers Over £400,000

2 2 1



QUOTE MR0560 - Bright south-west facing two bedroom, two bathroom, fourth floor apartment (703 Sq.Ft) with long lease, ideally situated within a short walk of Stratford station and the Olympic Park. Representing excellent value for money at offers in excess of £400,000, the property provides light and spacious, well planned accommodation with modern interiors throughout. Further features include a generous open plan reception/kitchen, family bathroom and master en-suite, second bedroom with built in study bed, gas central heating, double glazing, quality floor coverings, ample inbuilt storage, convenient lift access and secure fob entry.

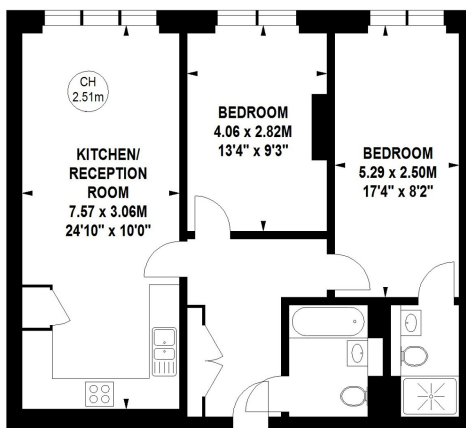
## Key Features

- Bright Two Bedroom Fourth Floor Apartment (703 Sq.Ft)
- Light and Spacious Open Plan Reception/ Kitchen
- Second Bedroom with Built In Study Bed
- Long Lease
- Short Walk Westfield Shopping Centre and Olympic Park
- Sought After Modern Development in Central Location
- Family Bathroom and Master En-Suite
- Lift Access and Secure Fob Entry
- Close to Stratford/Stratford International Stations
- QUOTE MR0560

### Wise Road, E15

Approximate gross internal area  
65.31 sq m / 703 sq ft

Key :  
CH - Ceiling Height



Fourth Floor

Although every attempt has been made to ensure accuracy, all measurements are approximate.  
This floorplan is for illustrative purposes only and not to scale.  
Measured in accordance with RICS Standards. © Outline.