

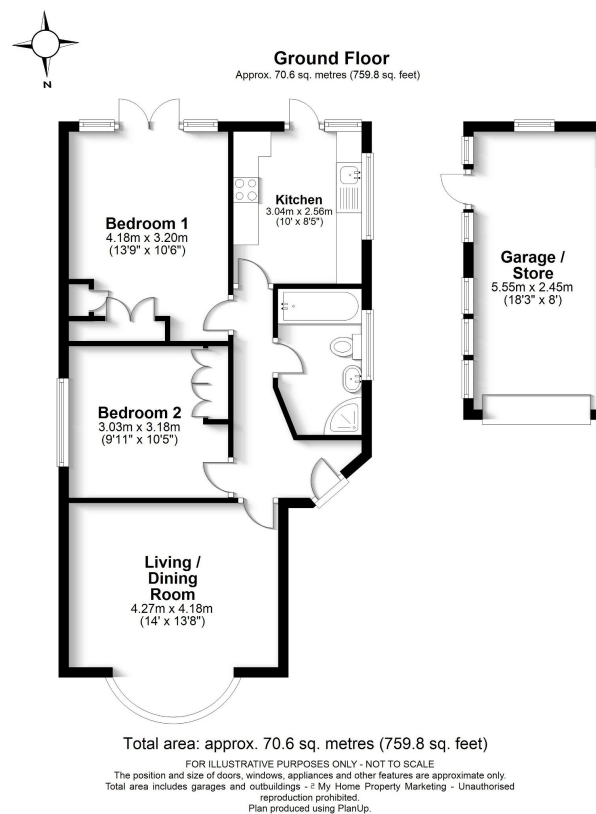
Cannonbury Avenue, Eastcote, HA5 1TT

£619,950

🛏️ 2 🚿 1 🚗 2



- Detached Bungalow
- Off Street Parking
- Planning Granted To Extend
- Catchment For Pinner High
- Prime HA5 Location
- Two Double Bedrooms
- Large South Facing Rear Garden
- Catchment For Cannon Lane
- Walking Distance To Transport Links
- REF/GP0453



This two double bedroom detached bungalow is set in a favoured location convenient for Pinner and Eastcote amenities. The accommodation comprises of two large bedrooms, a bathroom, a living room and a spacious kitchen leading to the large south facing garden. The property also benefits from having planning already granted for a loft conversion, a garage, is 0.2 miles away from Cannon Lane Primary School, 0.5 miles away from the popular Pinner High School and is 0.9 miles away from Eastcote Station (Metropolitan Line & Piccadilly Line).