



DANIEL ARCHER

exp[®] UK

@ daniel.archer@exp.uk.com

🌐 danielarcher.exp.uk.com

☎ 07792 947 756

Savill Gardens, London, SW20 0UJ

Guide Price £485,000

🛏️ 3 🚿 2 🛋️ 2

- Freehold House with garden
- Modern kitchen and large dining room
- Two bathrooms (one on each floor)
- Own private garden
- Internally arranged as two apartments, ideal for extended family living or letting.
- Large reception room / Fourth Bedroom
- Separate study space
- Three / Four Bedrooms
- Close to Raynes Park Centre & Station
- EPC Property Reference DA0587

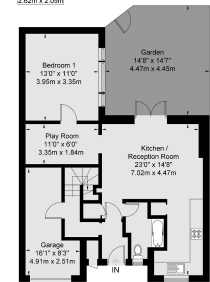
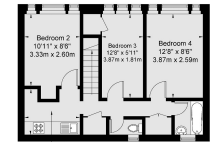


Freehold house, one of the larger style houses in the carters development, with 1218 sq ft living space, this three/four bedroom house with own garden is located close to Raynes Park, currently arranged as two apartments providing adaptable and independent living for an extended family or ideal for split accommodation for lettings income generation, the house could easily be reconverted to a traditional house arrangement. Accommodation provides: **Ground floor:** Hallway, Modern kitchen diner living room opening to garden, private garden, large reception/ bedroom 4, further study room, modern bathroom, garage. **First floor:** Three bedrooms, Bathroom, separate WC, kitchen (this room could be converted to a further bathroom to create an ensuite to the main bedroom.)





Savill Gardens
 Approx Gross Internal Area = 113.2 Sq.m 1218 Sq Ft
 (including Garage)



Viewed on 2022
 Viewed on 2022
 Viewed on 2022
 Whilst every effort has been made to ensure the accuracy of the floor plan, measurements of doors, windows and rooms are approximate and no responsibility is taken for any error or omission. This floor plan is for identification purposes only. Measured and drawn in accordance with RICS guidelines. Not drawn to scale, unless stated. Dimensions shown are to the nearest 0" and are to the points indicated by the arrow heads.

