

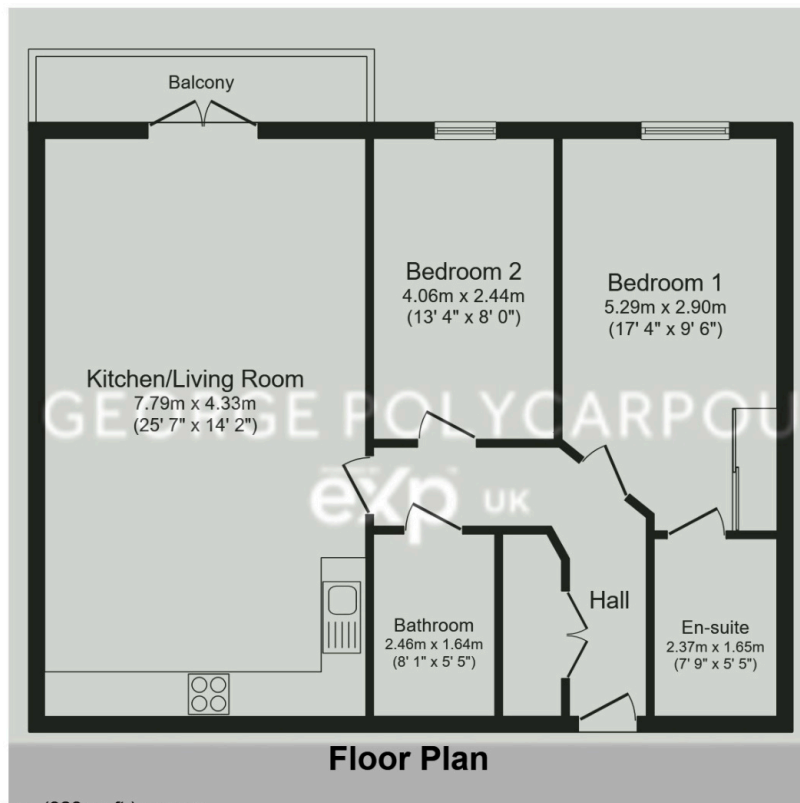
Catalonia Apartments Metropolitan Station Approach, Watford, WD18 7BL

£399,950

🛏️ 2 🚿 2 🚻 1



- Upper Ground Floor Apartment
- No Upper Chain
- Two Bathrooms
- Two Bedrooms
- Allocated Underground Parking
- Access To Residents Private Gymnasium and Swimming Pool
- Large Balcony
- 0.1 miles To Watford Metropolitan Station
- 0.3 Miles Away From Watford Boys Grammar School
- Marketed by George Polycarpou - REF/ GP0453



Total floor area 76.9 sq.m. (828 sq.ft.) approx

This plan is for illustration purposes only and may not be representative of the property. Plan not to scale. Powered by PropertyBox

This two bedroom apartment is set in the heart of WD18 and sold with no upper chain. The accommodation benefits from two bedrooms, two bathrooms (one ensuite), a large balcony accessed from the living room as well as an allocated underground parking space. The property has access to a residents private gymnasium and swimming pool and is within walking distance to all of the local amenities and Watford Metropolitan station (Metropolitan Line).