

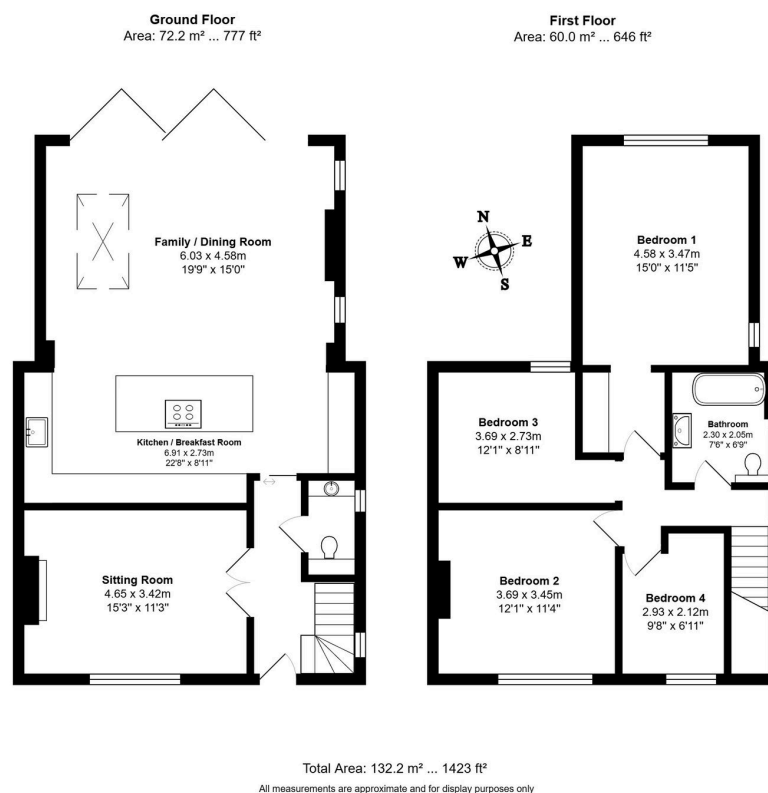
## Green Leys, St. Ives, PE27 6SB

Guide Price £450,000

4 1 1



- Four Bedroom Semi Detached Home Finished Beautifully
- Four Bedroom The Main With Walk Through Wardrobe
- Bi Fold Doors Opening To Rear Garden With Patio and Lawn
- Located South Of ST Audrey's Lane
- Virtual Tour Available Upon Request
- Extended To Create Modern Open Plan Kitchen/Breakfast/Family Room
- Completely Renovated Through Out To Impeccable Standard
- Driveway With Off Road Parking To Front Of Property
- Easy Walking Distance Of The Town Centre And Guided Bus Way
- EPC Rating: F/37



**\*\*If Calling to Enquire - Quote ref KP0855 Green Leys\*\***

This exceptional four bed semi has been transformed by owners who understand quality. The spectacular open plan extension with bifold doors creates a truly impressive living space, whilst comprehensive improvements including new boiler, electrics, and windows mean everything's

been properly sorted. Walk to town, schools, and the guided busway from this prime south St Audrey's Lane location.