

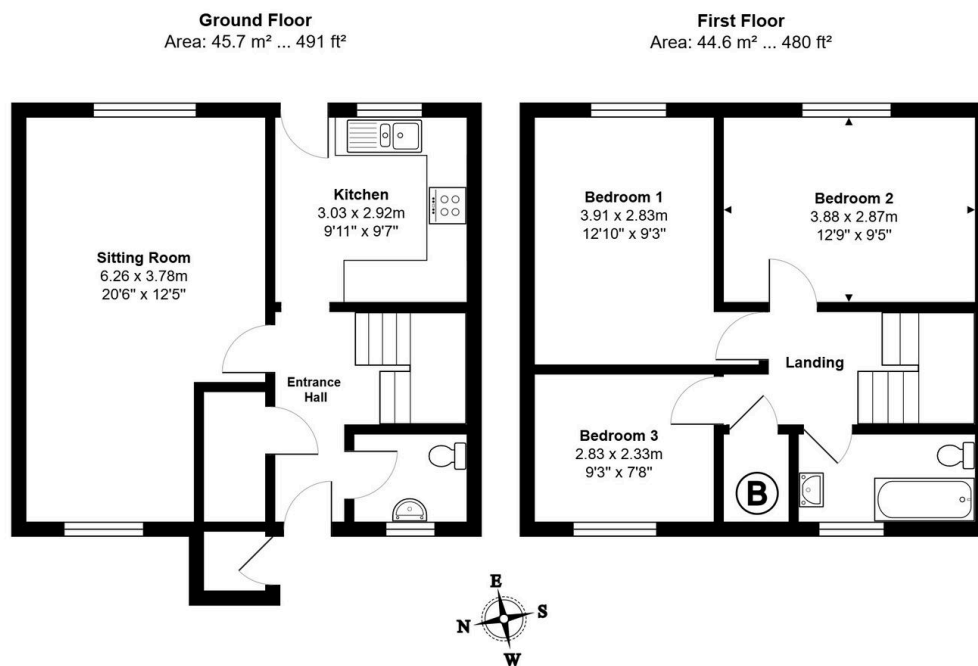
Burgess Walk, St. Ives, PE27 5AS

Guide Price £280,000

3 0 0



- Three Bedroom Mid Terrace Property
- Convenient Downstairs W.C
- Enclosed Rear Garden With Patio Area
- No Forward Chain!
- Just A Short Walk To St Ives Town Centre
- Close To Guided Busway And An Array Of Amenities
- Ideal Investment Opportunity
- South Of St Audrey's Lane
- Virtual Tour Available Upon Request
- EPC Rating D/67



Total Area: 90.2 m² ... 971 ft²
All measurements are approximate and for display purposes only

****If Calling to Enquire - Quote ref KP0855 Burgess Walk****

Fresh Start on Burgess Walk! This well-presented three-bedroom mid-terrace home in St Ives is the perfect blank canvas to make your own. With spacious living areas, three good-sized bedrooms, and no forward chain, this is an exciting opportunity for first-time buyers, downsizers, or investors looking for a hassle-free move.