

85 Wolseley Drive

Offers Over £360,000

3 3 2



- Three Storey Modern End Of Terrace Town House
- Three Bathrooms
- Dining Room
- Off Road Parking For Two Vehicles
- Superb Access To A5 & M1
- Three Double Bedrooms
- En-Suite To Master
- Ground Floor Cloakroom
- Cul-de-Sac Location
- Please quote reference MS0216

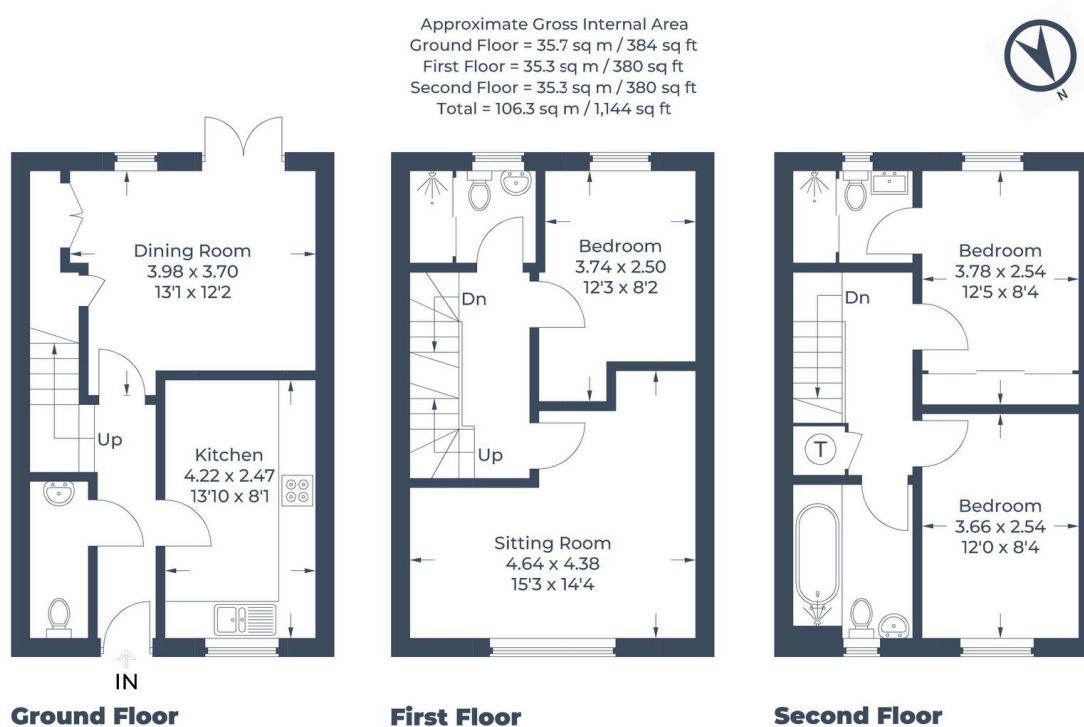


Illustration for identification purposes only,
 measurements are approximate, not to scale.
 © CJ Property Marketing Produced for EXP - Mark Summers

A modern three storey property situated in North Dunstable, offering spacious and versatile living throughout with two reception rooms, three double bedrooms and three bathrooms.

Entrance hall, kitchen, dining room, ground floor cloakroom, first floor landing, L-shaped lounge, first floor double bedroom, shower room, upper floor landing, two further double bedrooms with en-suite to master, additional upper floor bathroom, rear garden, allocated parking for two cars.

Please quote reference MS0216