



2 Milksey Cottages

Great Wymondley, Hitchin, SG4 7EZ





2 Milksey Cottages

Guide Price £575,000

A charming three-bedroom, two-bathroom, character cottage, situated just two miles from Hitchin Town Centre.

Located on the edge of Great Wymondley, with views over open fields to both the front and the rear, this extended, mid-terrace, period home, dating back to circa 1900 is offered for sale with no upper chain.

First-floor accommodation

On the first floor, there are three bedrooms, all with views over open fields, and a family bathroom.

Outside

As you approach the property, located on the left of the driveway, is a single garage with power connected. Off-street parking is available for three cars in front and to the side of the garage.

The front garden is paved with flower and shrub beds. Adjacent to the property is a further lawned area.

To the rear, the south-facing garden is laid to paved patio seating areas and lawn, which is bordered by a variety of mature flower and shrub beds.



Ground floor accommodation

The entrance hall has solid oak floorboards and access to the WC, a storage cupboard and a ground-floor shower room.

The Oak flooring continues through into the sitting room, which has a feature brick fireplace with an inset wood-burning stove. There is a window to the front aspect and glazed double doors leading through the open plan kitchen/dining room.

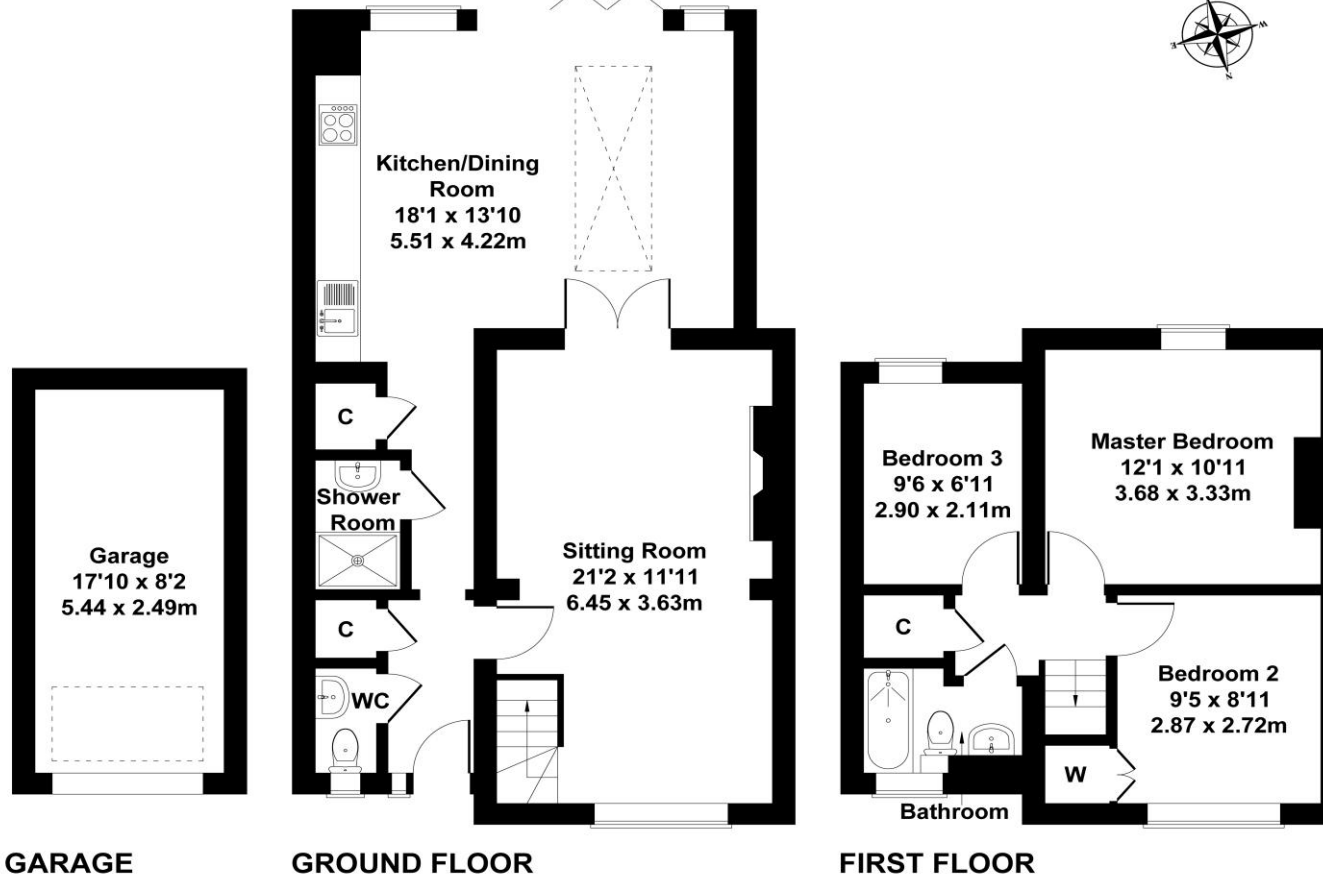
The kitchen dining area has a stone floor with underfloor heating, a large lantern skylight and bi-folding doors leading out to the south-facing rear garden



Call Gavin Mills to arrange a viewing on **07971 807 341**

2 Milksey Cottages

Approximate Gross Internal Area
1216 sq ft - 113 sq m



Not to Scale. Produced by The Plan Portal 2026
For Illustrative Purposes Only.



Score	Energy rating	Current	Potential
92+	A		
81-91	B		84 B
69-80	C		
55-68	D	65 D	
39-54	E		
21-38	F		
1-20	G		

Tel: 07971 807 341

Email: gavin.mills@exp-uk.co.uk

www.gavin-mills.co.uk

Gavin Mills



IMPORTANT: we would like to inform prospective purchasers that these sales particulars have been prepared as a general guide only. A detailed survey has not been carried out, nor the services, appliances and fittings tested. Room sizes should not be relied upon for furnishing purposes and are approximate. If floor plans are included, they are for guidance only and illustration purposes only and may not be to scale. If there are any important matters likely to affect your decision to buy, please contact us before viewing the property.