

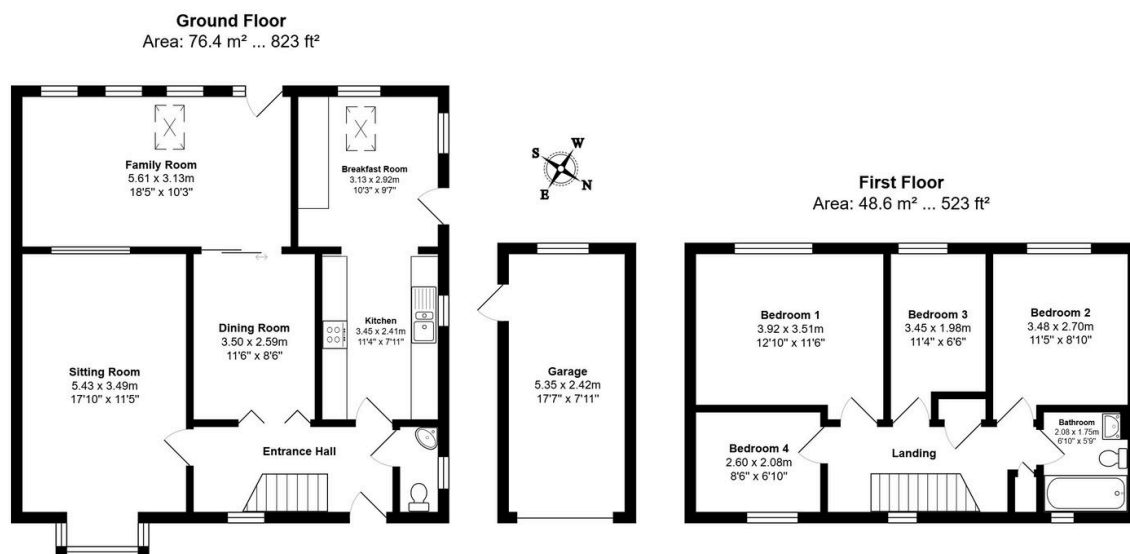
## Gainsborough Drive, St. Ives, PE27 3HH

Guide Price £450,000

4 2 3



- A Beautifully Presented Detached, Extended Home
- Four Bedrooms With Re Fitted Family Bathroom
- South Westerly Facing Rear Garden
- Well Kept Frontage With Driveway Leading To Single Garage
- Virtual Tour Available Upon Request.
- Vast Versatile Living Accommodation With Three Reception Rooms
- Well Presented Throughout, New Windows And Front Door By Current Vendor
- Rear Garden Beautifully Manicured With Side Seating Area
- Located Close To Every Day Amenities And The Guided Bus Way
- EPC Rating: C/71



Total Area: 138.1 m<sup>2</sup> ... 1486 ft<sup>2</sup>

All measurements are approximate and for display purposes only

**\*\*If Calling to Enquire - Quote ref KP0855 Gainsborough Drive\*\***

This beautifully presented, four bedroom, extended detached home offers the perfect blend of spacious accommodation and modern family living. The current owners have invested significantly in quality improvements, whilst the south westerly facing aspect floods the home with natural light throughout the day.