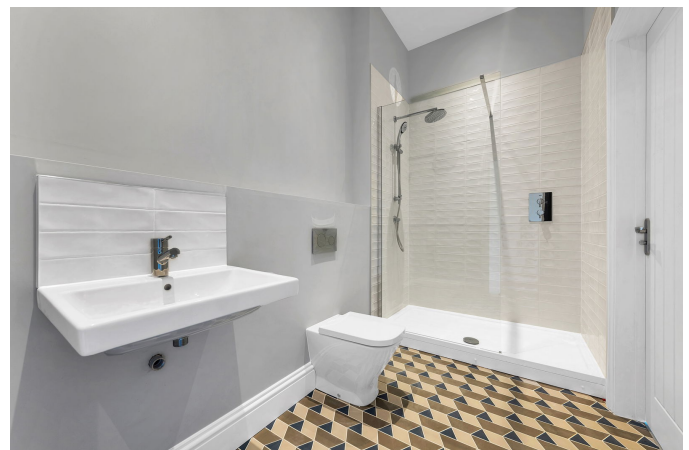


**White Towers, Wood End, Bluntisham, PE28 3LE**

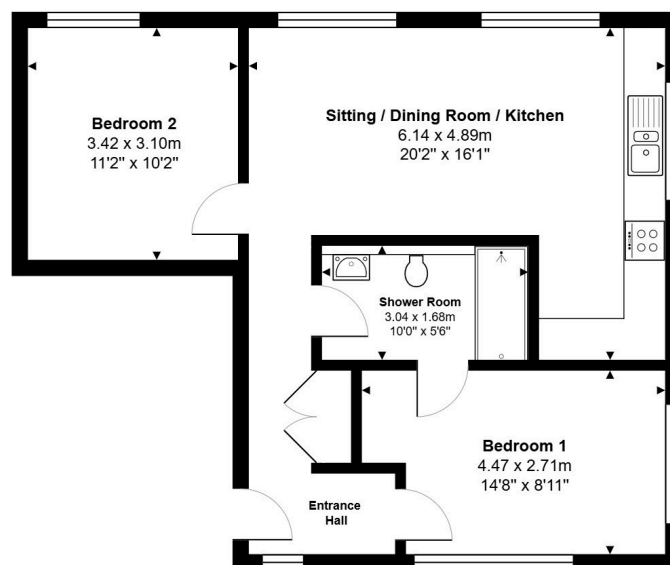
Guide Price £260,000

2 1 1



- First floor apartment offering enhanced privacy and elevated position
- Bright open-plan kitchen/dining/living space with dual-aspect windows
- Modern shower room featuring walk-in rainfall shower and quality fittings
- Allocated parking space ensuring convenience and security
- Virtual Tour Available Upon Request
- Two well-proportioned bedrooms providing excellent layout flexibility
- Modern kitchen with sleek units, quartz worktops and integrated appliances
- Underfloor heating throughout with energy-efficient construction
- 10 year warranty providing complete peace of mind
- EPC Rating: C/79

First Floor

Total Area: 58.7 m<sup>2</sup> ... 632 ft<sup>2</sup>

All measurements are approximate and for display purposes only

A beautifully appointed first floor apartment in the prestigious White Towers development, offering two bedrooms, contemporary design, and excellent value. Perfect for couples, small families, or investors seeking quality in a desirable village location.