

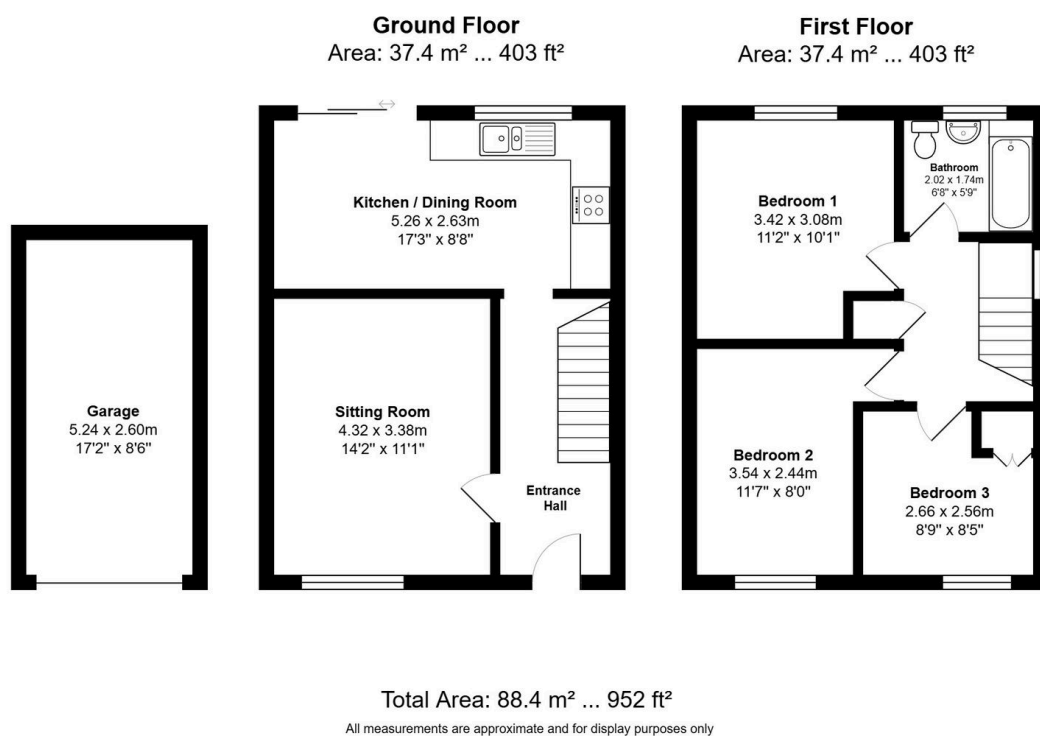
Anson Drive, St. Ives, PE27 3UZ

Guide Price £275,000

3 1 1



- Spacious sitting room ideal for relaxing or entertaining
- New carpets and laminate flooring installed in 2022
- Front and rear gardens to enjoy the sunshine all day
- Single garage – perfect for storage or hobby use
- Virtual tour available upon request
- Kitchen/diner opens straight onto the rear garden
- Three generous bedrooms offering great flexibility
- Off-road parking spaces both front and back
- Located in a well-connected and family-friendly neighbourhood
- EPC Rating: TBC



Smartly updated three-bed semi with garage and gardens – a great step up for growing families or first-time buyers!