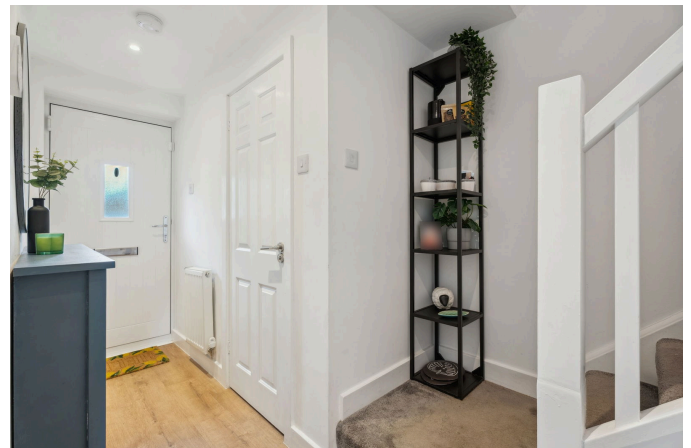


16 Coopers Way, Houghton Regis

Guide Price £350,000

3 1 2



- Show-Home Condition
- Bi-Fold Doors
- Open-Plan Living Area
- Driveway Parking For 3 Cars
- Close To Junction 11 a Of The M1
- Three Bedrooms
- Ground Floor Cloakroom
- Garage
- Cul-De-Sac Location
- Please quote reference no. MS0216

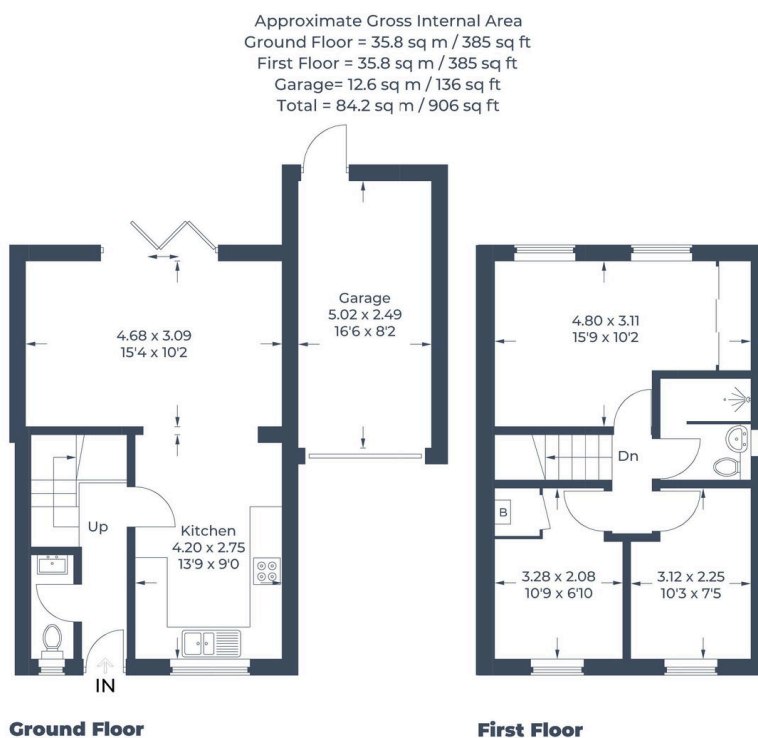


Illustration for identification purposes only,
 measurements are approximate, not to scale.
 © C J Property Marketing Produced for EXP - Mark Summers

A truly stunning semi-detached property in a quiet Cul-de-Sac presented in Show-Home condition throughout.

Entrance hall, cloakroom, Open Plan living area, kitchen, three first floor bedrooms, luxury shower room, garage, driveway and manicured rear garden.

uPVC double glazing and gas central heating.

Please quote reference no. MS0216