

The Brambles Limes Park Road, St. Ives, PE27 5NJ

Offers Over £150,000

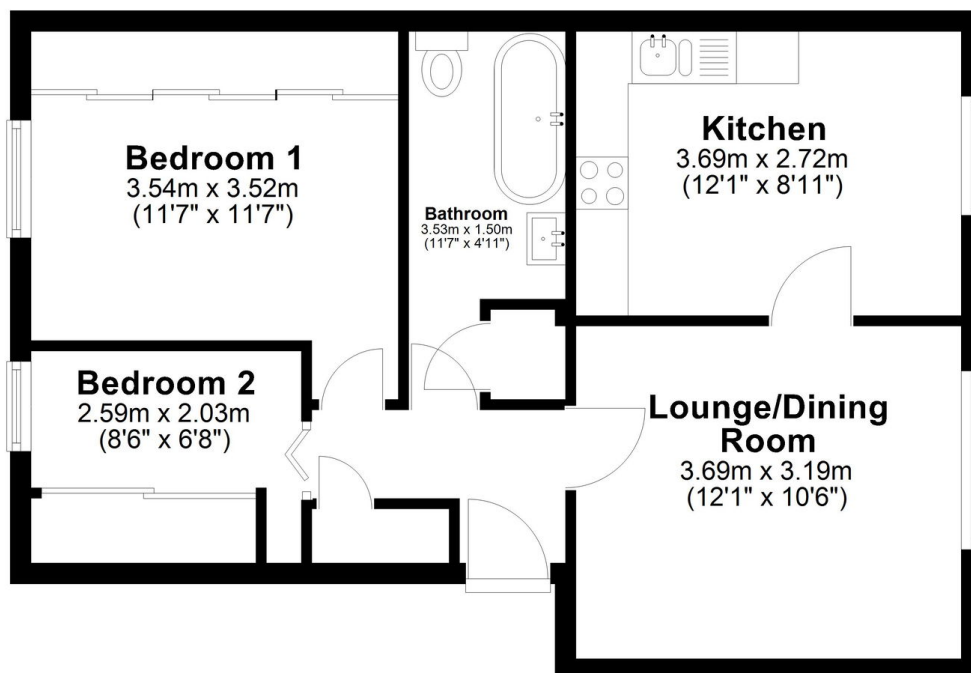
2 1 1



- A Well Presented First Floor Apartment
- Two Bedrooms Offering Built In Storage Solutions
- Heating Upgraded By Previous Owners
- Communal Green Gardens To Rear
- Virtual Tour Available Upon Request
- Modernised Kitchen / Breakfast Room
- Lounge Overlooking Fields Beyond
- Allocated Parking With Additional Overflow
- South Of the River Within Walking Distance of St Ives Town Centre
- EPC Rating: C/80

First Floor

Approx. 48.8 sq. metres (525.3 sq. feet)



Total area: approx. 48.8 sq. metres (525.3 sq. feet)

Beautifully updated two-bedroom first-floor apartment with field views, allocated parking, and excellent Cambridge connectivity. Tastefully modernised throughout with fitted shutters and new heating, perfectly positioned adjacent to Hemingford Grey and St Ives town centre.