




JON-PAUL BRAMPTON POWERED BY **exp** TM UK

@jon-paul.brampton@exp.uk.com

 jonpaulbrampton.exp.uk.com

 07359 015 020

Cherry Tree House, Gubblecote, Tring, Hertfordshire

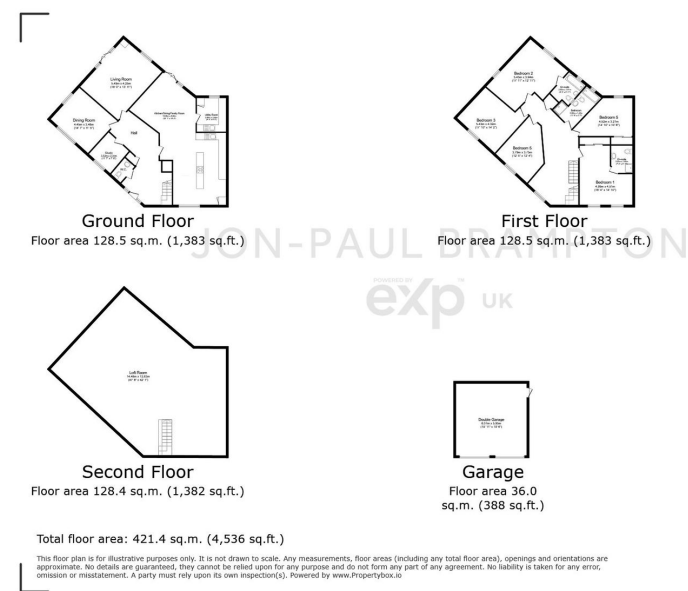
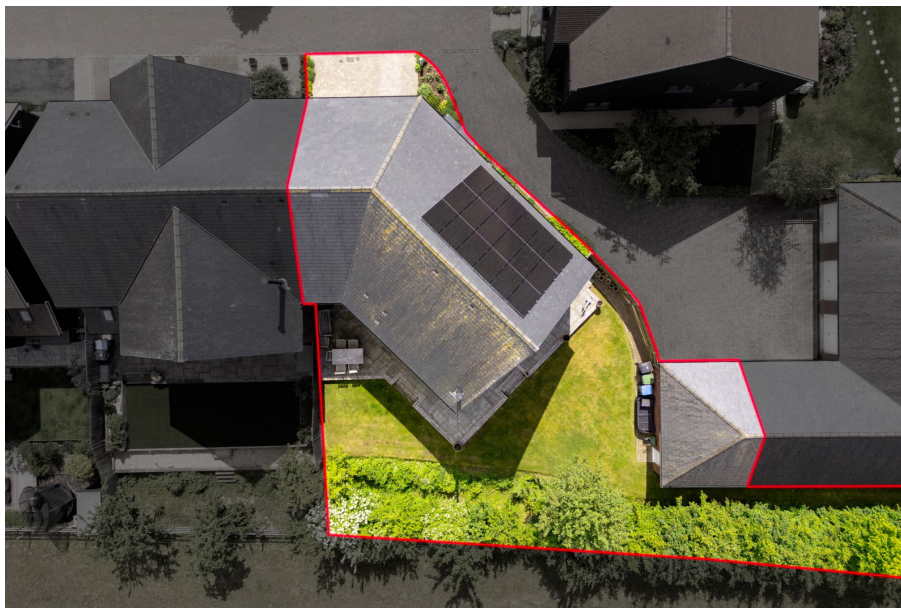
Offers Over £950,000

5 3 3



- Over 3000 sq ft of accommodation
- 3 Bathrooms
- Wood burner
- 3 reception rooms
- Watch the video tour
- 5 Bedrooms
- Kitchen-diner-family room
- Double garage
- No chain
- Please quote JB0294 when calling thru Rightmove, Zoopla or OnTheMarket





Jon-Paul Brampton presents...Cherry Tree House; over 3000 sq ft of high spec space in the charming hamlet of Gubblecote

Energy performance certificate (EPC)				
<div>Cherry Tree House</div> <div>2, Landan Grove</div> <div>Gubblecote</div> <div>Warwick</div> <div>CV35 9FA</div>	<div>Energy rating</div> <div>B</div>	Valid until	9 January 2028	
		Certificate number:	0154-3855-7297-6796-6395	
		Property type		Semi-detached house
		Total floor area		256 square metres
		Rules on letting this property		
		Properties can be let if they have an energy rating from A to E.		
		<p>You can read guidance for landlords on the regulations and exemptions https://www.gov.uk/guidance/landlords-exemptions-property-minimum-energy-efficiency-standard-landlord-guidance</p>		

eXp World UK Ltd is a registered company at Level 37, 25 Canada Square, London, E14 5LQ.
Registered company number is 12016573. VAT Registration Number is 327 4120 29