



CHRIS DURRANT

POWERED BY
exp™
UK

@ chris.durrant@exp.uk.com

chrisdurrant.exp.uk.com

📞 07595 473 891

Macro House, 36 Atlas Way, Oakgrove, Milton Keynes, MK10 9UG

£300,000

🛏 2 🚿 2 🚗 1

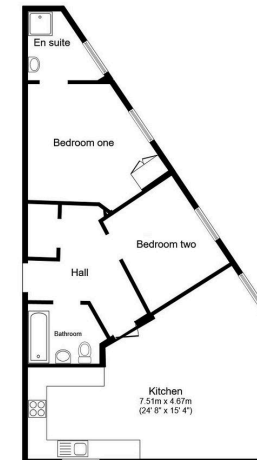
- Stunning, elevated views.
- No upward chain
- Sought after location
- Close to commuting routes, amenities and schools
- Balcony
- Two double bedrooms
- Lift access
- For all enquiries please quote CD0104



Stunning and far reaching elevated views.....This apartment is superb! The open plan living space is flooded with natural light and has a balcony giving outside space..... and those views! There are two double bedrooms with the master bedroom having built in wardrobes and an en suite. Being sold with no upward chain in one of the most sought after areas of Milton Keynes.

For all enquiries please quote CD1004





Total floor area: 75.1 sq.m. (808 sq.ft.)

This floor plan is for illustrative purposes only. It is not drawn to scale. Any measurements, floor areas (including any total floor area), openings and orientations are approximate. No details are guaranteed, they cannot be relied upon for any purpose and do not form any part of any agreement. No liability is taken for any error, omission or misstatement. A party must rely upon its own inspection(s). Powered by www.Propertybox.io



Energy performance certificate (EPC)																							
Flat 17, Mason House 30 Atlas Way Swindon Wiltshire SN1 2JG	Energy rating	Valid until	16 January 2029																				
	B	Certificate number	8961-7238-6178-6225-8962																				
Property type	Top floor flat																						
Total floor area	72 square metres																						
Rules on letting this property																							
Properties can be let if they have an energy rating from A to E.																							
You can read guidance for landlords on the regulations and exemptions https://www.gov.uk/guidance/domestic-private-rented-property-minimum-energy-efficiency-standard-landlord-guidance .																							
Energy rating and score																							
This property's energy rating is B. It has the potential to be B.		The graph shows this property's current and potential energy rating.																					
See how to improve this property's energy efficiency.		Properties get a rating from A (best) to G (worst) and a score. The better the rating and score, the lower your energy bills are likely to be.																					
<table><tr><th>Score</th><th>Energy rating</th></tr><tr><td>92+</td><td>A</td></tr><tr><td>81-91</td><td>B</td></tr><tr><td>69-80</td><td>C</td></tr><tr><td>55-68</td><td>D</td></tr><tr><td>39-54</td><td>E</td></tr><tr><td>21-38</td><td>F</td></tr><tr><td>1-20</td><td>G</td></tr></table>		Score	Energy rating	92+	A	81-91	B	69-80	C	55-68	D	39-54	E	21-38	F	1-20	G	<table><tr><th>Current</th><th>Potential</th></tr><tr><td>B</td><td>A</td></tr></table>		Current	Potential	B	A
Score	Energy rating																						
92+	A																						
81-91	B																						
69-80	C																						
55-68	D																						
39-54	E																						
21-38	F																						
1-20	G																						
Current	Potential																						
B	A																						
For properties in England and Wales: the average energy rating is D the average energy score is 60																							

eXp World UK Ltd is a registered company at Level 37, 25 Canada Square, London, E14 5LQ.

Registered company number is 12016573. VAT Registration Number is 327 4120 29