

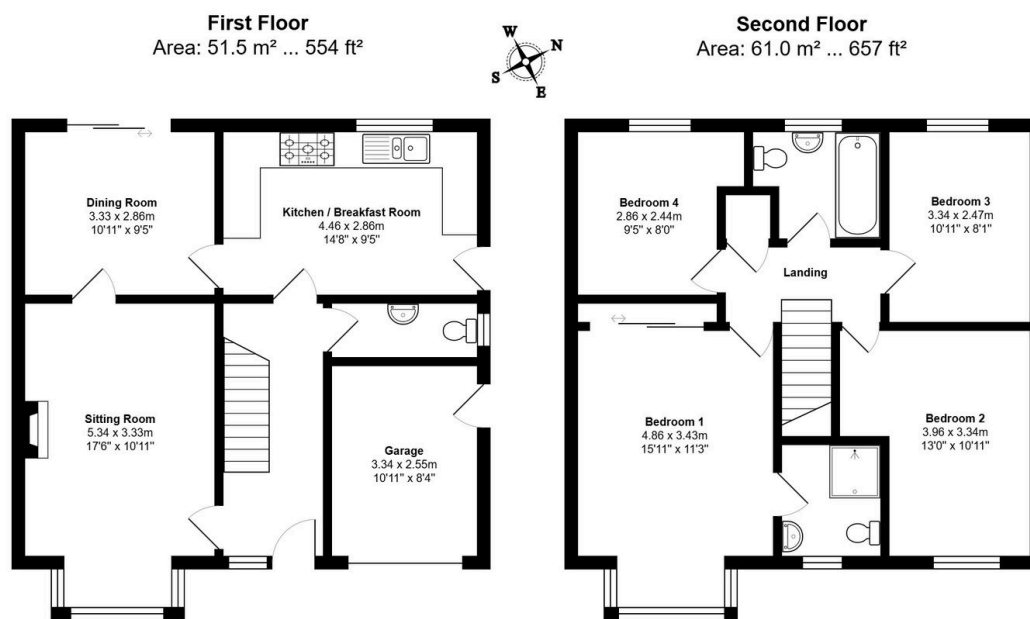
The Sycamores, Bluntisham, Huntingdon, PE28 3XW

Offers Over £375,000

4 3 2



- Substantial Detached Home
- Four Well Proportioned Bedrooms
- Ensuite To Main Bedroom
- Versatile Accommodation Layout
- Opportunity To Modernise/Re-model Current Interior
- Potential To Extend To Side Or Rear STPP
- Good Sized Wrap Around Plot
- Village Location With Amenities
- Virtual Tour Available Upon Request
- EPC Rating: D/66



Total Area: 112.5 m² ... 1211 ft² (excluding garage)

All measurements are approximate and for display purposes only

****If Calling to Enquire - Quote ref KP0855 The Sycamores****

A substantially proportioned detached residence offering ample potential. Offering four good sized bedrooms and flowing rear reception spaces embracing westerly garden views, offering the astute purchaser exceptional extension potential in picturesque Bluntisham.