

**White Towers, Wood End, Bluntisham, Cambridgeshire, PE28 3LE**

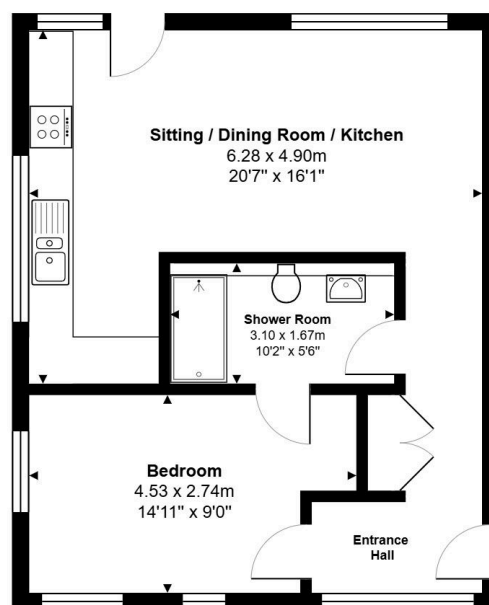
Guide Price £220,000

🛏 1 🍴 1 🛋 1



- Exclusive first floor apartment in prestigious White Towers development
- Open-plan kitchen/dining/living area with dual-aspect windows
- Energy-efficient design with modern insulation and double glazing
- 10 year warranty providing complete peace of mind
- Virtual Tour Available Upon Request
- One spacious double bedroom with room for king-size bed and furniture
- Contemporary kitchen with quartz worktops and integrated appliances
- Underfloor heating throughout for year-round comfort
- Allocated parking space directly outside the building
- EPC Rating: C/79

Ground Floor

Total Area: 49.0 m<sup>2</sup> ... 527 ft<sup>2</sup>

All measurements are approximate and for display purposes only

An exclusive, first floor apartment, in Bluntisham, combining contemporary luxury and rural charm. Featuring, high quality finishes, a private garden and off road parking. All within minutes of countryside walks and village amenities.