

Stepping Stones, Hemingford Grey, PE28 9EL

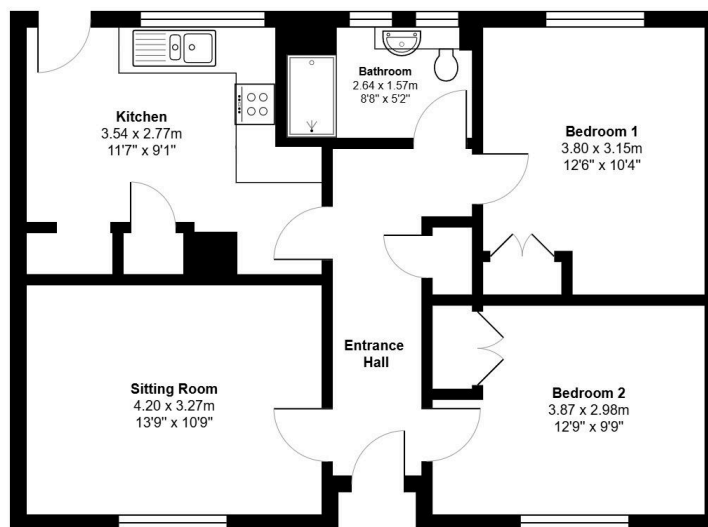
Offers Over £310,000

2 1 1



- Prime Village Position
- No Forward Chain
- Enclosed Rear Garden
- Allocated Parking at the Rear
- Virtual Tour Available Upon Request
- Semi Detached Bungalow
- Two DOUBLE Bedrooms
- Brick-Built Store - Bonus!
- Riverside Walks Nearby
- EPC Rating: C/70

Ground Floor



Total Area: 66.1 m² ... 712 ft²

All measurements are approximate and for display purposes only

****If Calling to Enquire - Quote ref KP0855 Stepping Stones****

Looking for the Perfect Village Setting? This well-presented two-double bedroom semi-detached bungalow could be ideal! Offered with no forward chain and thoughtfully maintained throughout, this practical home is ready for its next chapter.