

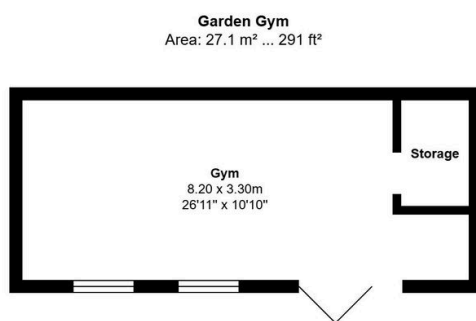
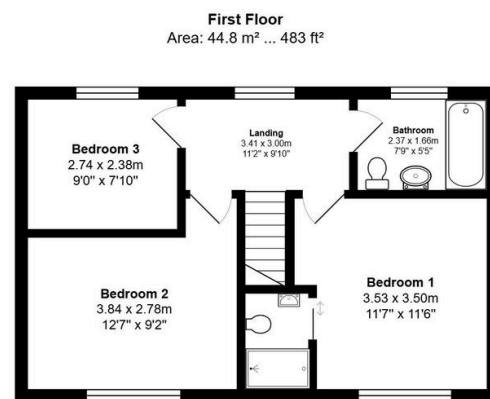
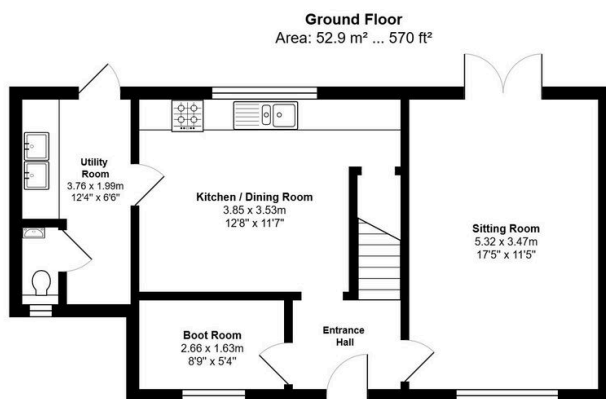
Feoffees Road, Somersham, Huntingdon, PE28 3JE

Offers Over £325,000

3 2 1



- Semi Detached three-bedroom home in a popular village setting
- Stylish kitchen/diner at the rear, ideal for entertaining
- Three bright and well-proportioned bedrooms
- Flexible outdoor space – ideal for studio, office or games room
- Virtual Tour Available Upon Request
- Spacious dual-aspect sitting room with doors to the garden
- Separate utility room, downstairs WC and boot room
- Landscaped rear garden with large patio and lawn
- Good access to village amenities, schools and commuter routes
- EPC Rating: C/70



Total Area: 124.8 m² ... 1344 ft²

All measurements are approximate and for display purposes only

A stylish and spacious semi detached home with a fantastic garden gym and everything a modern family needs – inside and out!