

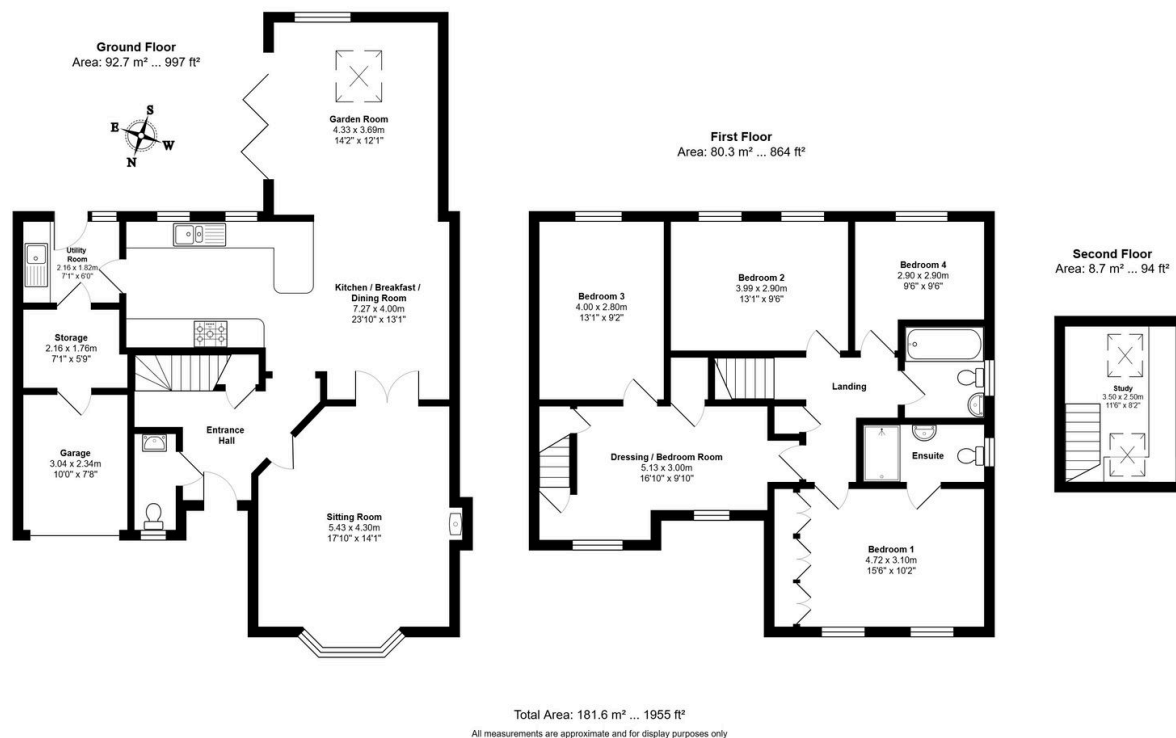
Rushington Close, St. Ives, PE27 3JH

Offers Over £600,000

4 3 1



- Executive Detached Home That Has Been Extended And Well Finished
- Four / Five Versatile Bedrooms
- En-Suite And Built In Wardrobes To Main Bedroom
- South Facing Rear Garden With Lawn And Patio Area
- Virtual Tour Available Upon Request
- Open Plan Kitchen / Dining / Family Room With Bi-fold Doors To Garden
- Part Loft Conversion With Building Regs Offering Extra Room
- Utility Room And Convenient Downstairs W.C
- Quiet Cul-De-Sac Location Off St Audrey's Lane
- EPC Rating:



Your key to executive luxury in a prime location.. A stunning detached home offering open-plan living, designer kitchen, five versatile bedrooms and a sun-drenched south-facing garden. The perfect blend of luxury and practicality in a sought-after cul-de-sac, minutes from town amenities.