



ANITA SANFORD

exp<sup>®</sup> UK

@anita.sanford@exp.uk.com

anitanford.exp.uk.com

07702 259 092



# The Pightle, Oving , Aylesbury, HP22

Offers Over £700,000

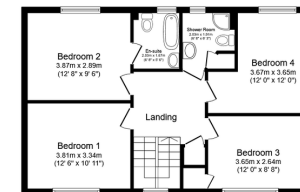
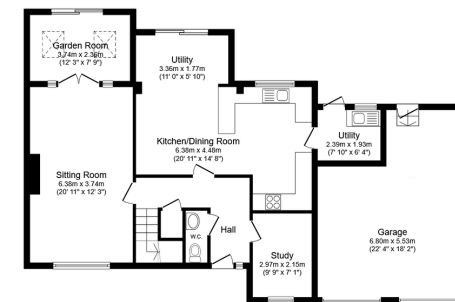
🛏 4 🚿 2 🚗 3





- Detached four bedroom house
- Study
- Bathroom ensuite, shower room and downstairs cloakroom
- Corner plot with lovely landscaped garden
- Immaculate presentation throughout
- Three reception rooms
- Separate Utility room
- Double garage and off street parking
- Quiet village location
- Quote AS0701 on Rightmove and Zoopla





Total floor area: 187.3 sq.m. (2,016 sq.ft.)

This floor plan is for illustrative purposes only. It is not drawn to scale. Any measurements, floor areas (including any total floor area), openings and orientations are approximate. No details are guaranteed, they cannot be relied upon for any purpose and do not form any part of any agreement. No liability is taken for any error, omission or misstatement. A party must rely upon its own inspection(s). Powered by [www.propertybox.io](http://www.propertybox.io)

A spacious and light detached four bedroom family home with a double garage and off street parking in a quiet and popular village location.