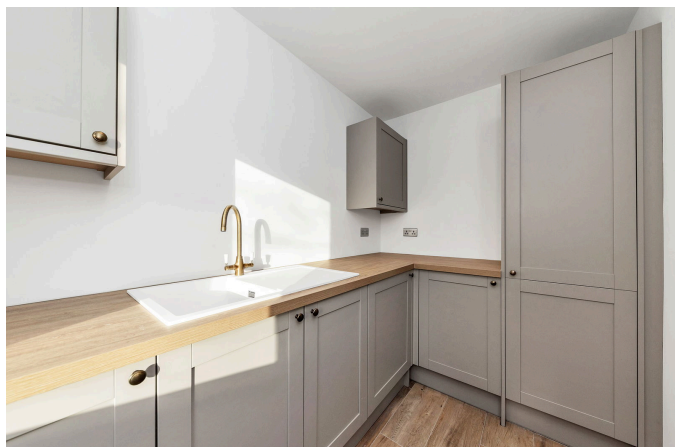


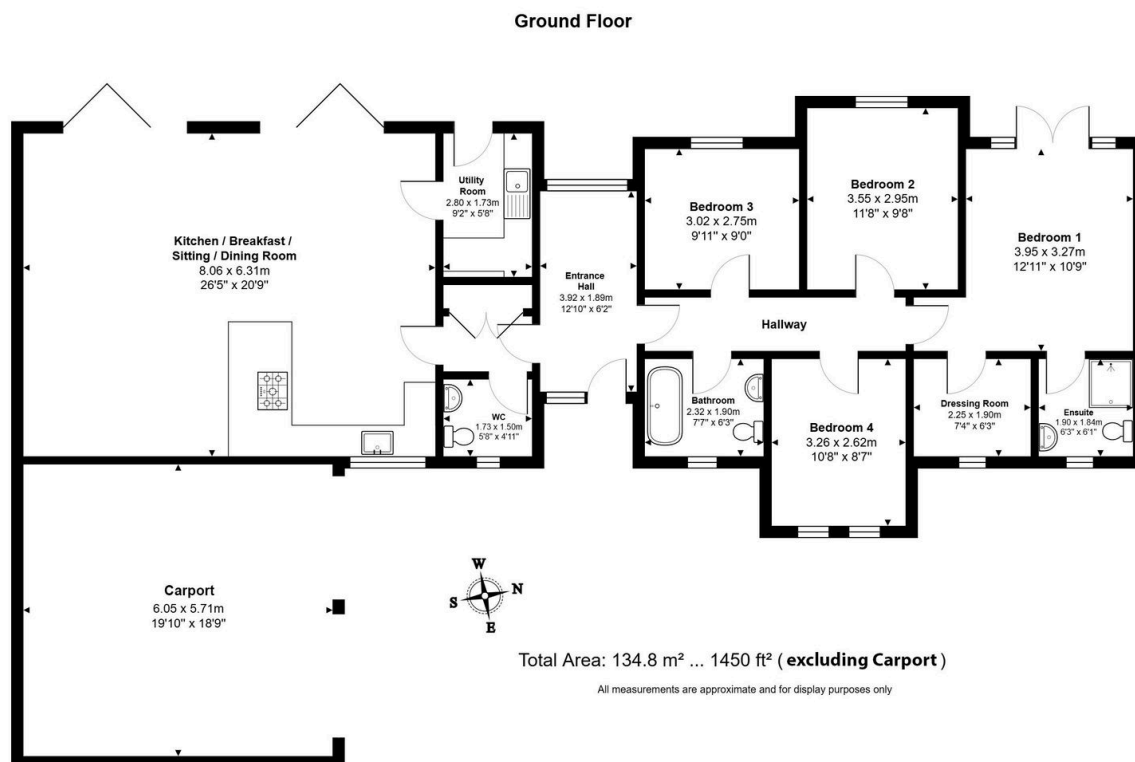
Bluntisham Road, Colne, Huntingdon, PE28 3LY

Guide Price £685,000

4 2 1



- Move-in ready home offering the perfect blend of modern convenience.
- Four spacious bedrooms, including a luxurious en-suite master bedroom
- Beautiful enclosed garden offering a private outdoor retreat.
- Energy-efficient new-build home designed for comfort and cost-effectiveness.
- Virtual Tour Available Upon Request.
- Stunning brand-new detached bungalow in a sought-after village location.
- Stylish open-plan kitchen, dining, and living area perfect for modern living.
- Off-road parking and a double carport providing ample space and storage.
- Peaceful rural setting with easy access to local amenities and transport links.
- EPC Rating: C/77



Brand New Bungalow Bliss! This beautifully designed four-bedroom detached bungalow in the heart of Colne is the perfect combination of modern luxury and countryside charm. With open-plan living, a stunning enclosed garden, and a sought-after village location, could this be your dream home?