

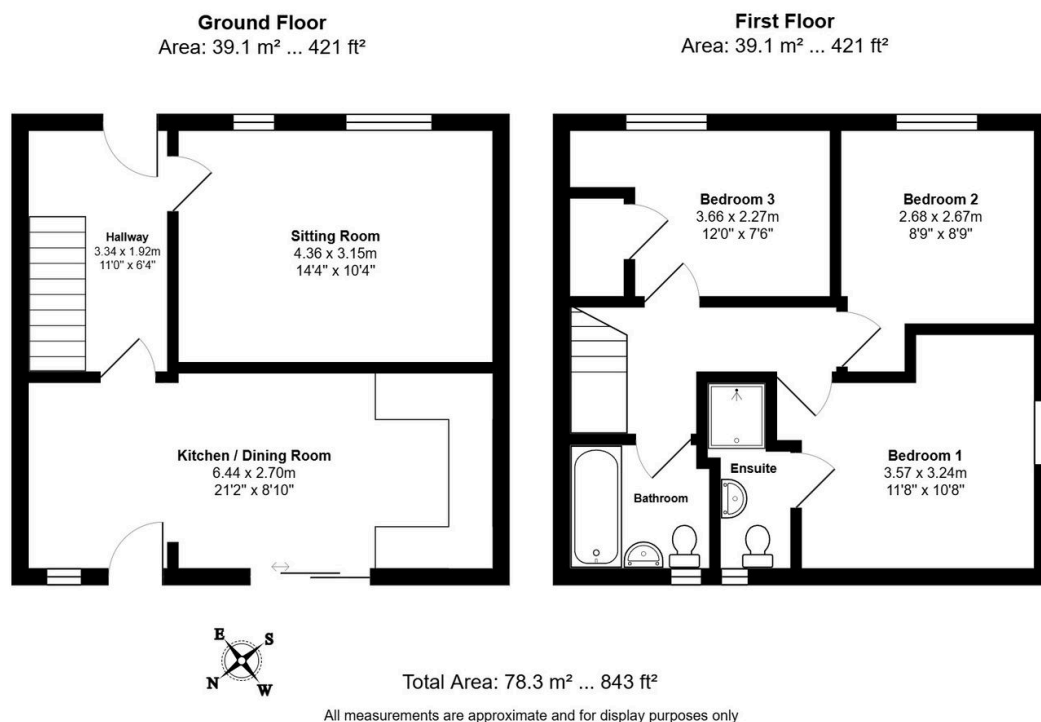
## Park Mews, Overcote Lane, Needingworth, PE27 4TU

Guide Price £300,000

3 3 1



- Modern End Of Terrace Property
- Beautifully Finished Through Out
- Well Kept Easy Maintenance Courtyard Garden
- New Boiler Installed By Current Owners
- Virtual Tour Available Upon Request
- Three Double Bedrooms
- En-suite To Main Bedroom
- Set Within Private Development Of Three Houses
- Village Location With Access To An Array Of Amenities
- EPC Rating: C/77



Looking for low maintenance with a modern elegant touch? Immaculate three-bedroom end-terrace in quiet Needingworth setting. Contemporary interiors, private courtyard garden, and village amenities on your doorstep. The perfect blend of modern luxury and countryside charm.