

Your Logo

24 station terrace Marsh Drive , Great Linford

£400,000

🛏 3 🚿 1 🚿 1



I highly recommend watching the video!

WhatsApp to book a viewing slot on Saturday 27th April.

For the Creatives, the Dreamers, the Remote Workers.

24 Station Terrace, Great Linford – your next inspired space.

Located on the edge of a historic village a Short distance from canal-side walks and the beautiful peaceful Great Linford Manor grounds. this 2-bed period gem has everything:

- Cosy lounge with feature fireplace for slow mornings and cosy evenings
- Light-filled rooms for your studio, home office or next big idea
- A garden made for coffee

Your Logo

breaks + late-night chats

- views of the lake in the winter and a green outlook in the summer, sunset views.

Quick links to MK + London, but you'll never want to leave.

This one's for the makers. The thinkers. The ones who crave charm over cookie-cutter.
WhatsApp to book your viewing.

Ref TB1154

Your Logo

Key Features

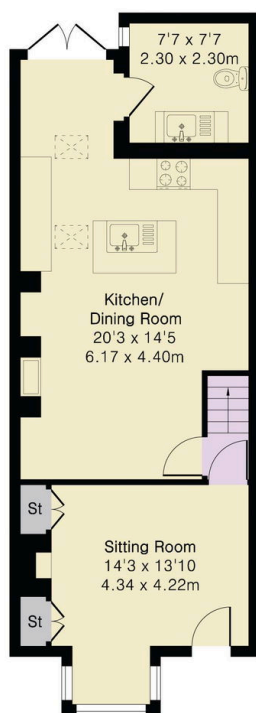
-
-
-
-
-
-

Approximate Gross Internal Area 1221 sq ft - 113 sq m

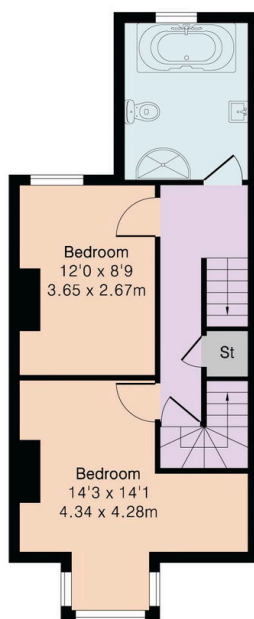
Ground Floor Area 569 sq ft – 53 sq m

First Floor Area 432 sq ft – 40 sq m

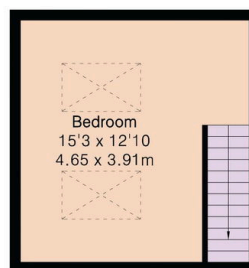
Second Floor Area 220 sq ft – 20 sq m



Ground Floor



First Floor



Second Floor