



CHRIS DURRANT

POWERED BY
exp™ UK

@ chris.durrant@exp.uk.com

chrisdurrant.exp.uk.com

📞 07595 473 891

Parsley Close, Walnut Tree, Milton Keynes, MK7 7DA

£475,000

🛏 4 🚿 2 🚗 2

- Four/five bedroom home
- Extended family home
- Beautifully presented throughout
- Garden with a good degree of privacy
- Kitchen/dining room
- Versatile accommodation
- Sought after area
- Stunning bathrooms
- For all enquiries please quote CD0104

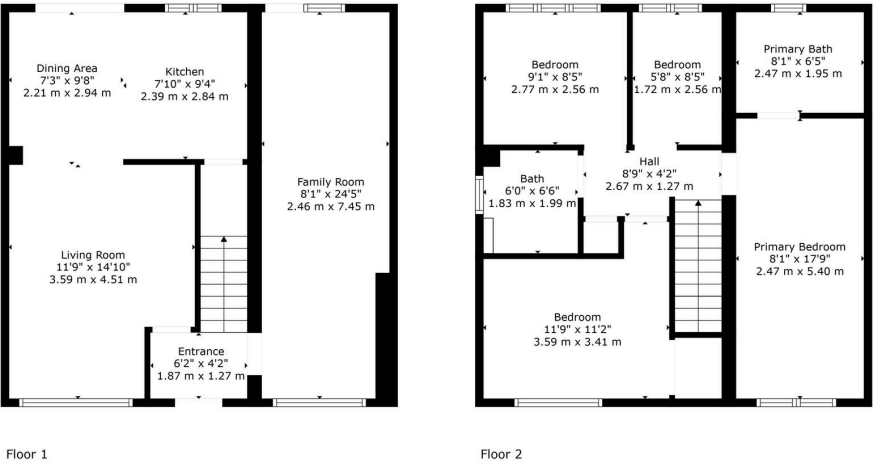


Spacious and Versatile 4/5-Bedroom Detached Home in Walnut Tree, Milton Keynes

Discover this beautifully extended and well-maintained family home located in the sought-after area of Walnut Tree, Milton Keynes. Perfectly suited for families and commuters, this four/five-bedroom detached property offers versatile living spaces and is conveniently close to local shops, highly regarded schools, and essential amenities.

For all enquiries please quote CD0104





TOTAL: 1173 sq. ft, 109 m2
FLOOR 1: 583 sq. ft, 54 m2, FLOOR 2: 590 sq. ft, 55 m2
Floor Plan Created By Harper & Radl. Measurements Deemed Highly Reliable But Not Guaranteed



Energy performance certificate (EPC)

34, Parslow Close
Widale Farm
WILTON NEWMES
MK7 7DA

Energy rating

D

Valid until: 25 May 2027

Certificate number: 2888-2021-7255-6415-6914

Property type

Detached house

Total floor area

69 square metres

Rules on letting this property

Properties can be let if they have an energy rating from A to E.
You can read [guidance for landlords on the regulations and exemptions](#) <https://www.gov.uk/guidance/domestic-private-rented-property-minimum-energy-efficiency-standards-landlord-guidance>

Energy rating and score

This property's energy rating is D. It has the potential to be B.
[See how to improve this property's energy efficiency.](#)

Score | Energy rating

92+

A

81-91

B

69-80

C

55-68

D

35-54

E

21-34

F

1-20

G

Current

Potential

64 D

84 B

The graph shows this property's current and potential energy rating.
Properties get a rating from A (best) to G (worst) and a score. The better the rating and score, the lower your energy bills are likely to be.
For properties in England and Wales:
the average energy rating is D
the average energy score is 60

eXp World UK Ltd is a registered company at Level 37, 25 Canada Square, London, E14 5LQ.
Registered company number is 12016573. VAT Registration Number is 327 4120 29