



Merton, Thetford, IP25 6QL

Guide Price £600,000

JANETTE ETHERIDGE

POWERED BY
exp® **UK**

Merton, Thetford, IP25 6QL

Reference number JE1166. Tucked away in a secluded spot, this beautifully renovated detached cottage is a true retreat from the hustle and bustle of daily life. Boasting a wealth of original features, the property offers the perfect blend of rustic charm and modern convenience.

The property sits on 0.64 acre of gardens, offering plenty of space for outdoor activities or peaceful contemplation. The gardens are a haven of greenery, ideal for gardeners or anyone looking for a slice of nature to call their own.

A double cart lodge provides ample storage space for vehicles or could be repurposed for hobbies or workshops, there is also a home office/storage room. This is a property that truly offers a sense of escape and seclusion, all while being surrounded by nature and far reaching field views.





Utility room

Kitchen/Breakfast Room

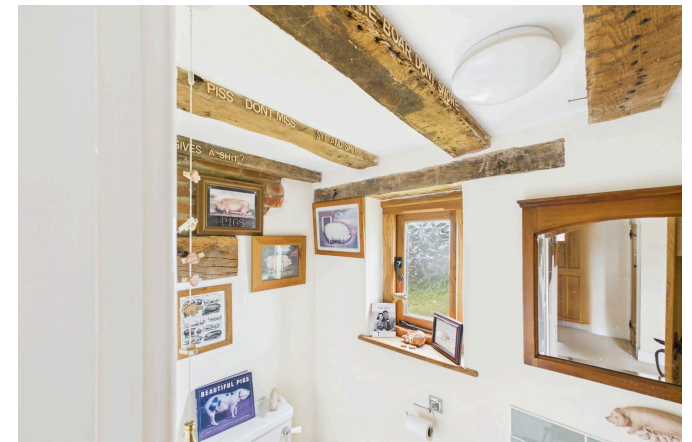
Living Room



Reception Room

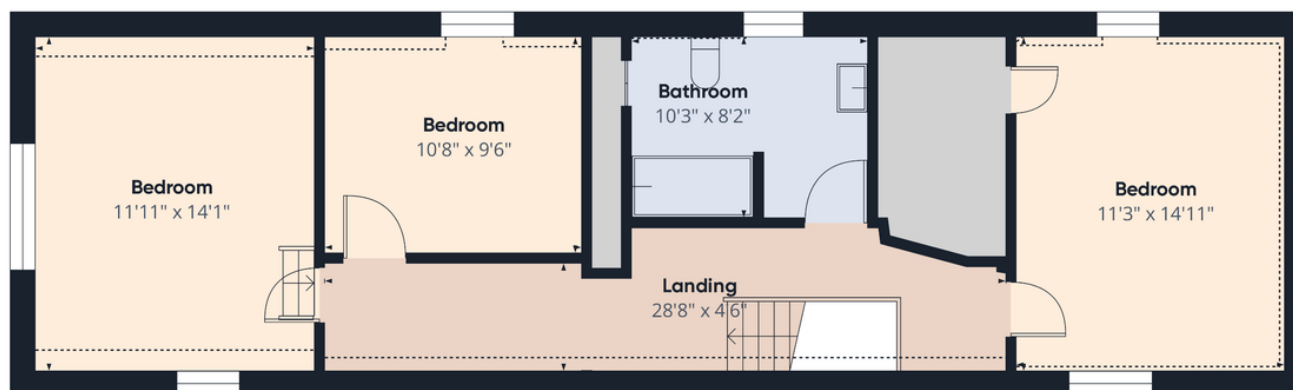
Cloakroom

Rear lobby





Floor 0



Floor 1

Approximate total area⁽¹⁾

1468.31 ft²

Reduced headroom

46.13 ft²

(1) Excluding balconies and terraces

Reduced headroom

..... Below 5 ft

While every attempt has been made to ensure accuracy, all measurements are approximate, not to scale. This floor plan is for illustrative purposes only.

Calculations are based on RICS IPMS 3C standard.

GIRAFFE360

JANETTE ETHERIDGE

POWERED BY
exp [®] UK