

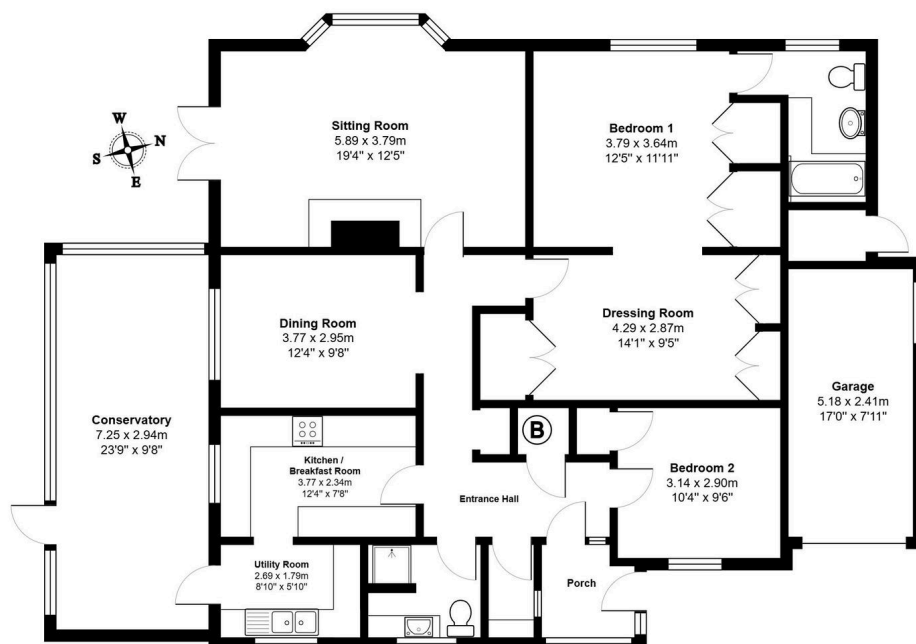
Glebe Road, Hemingford Grey, Huntingdon, PE28 9DS

Guide Price £500,000

2 2 2



- Detached Bungalow in Peaceful Hemingford Grey Cul-de-sac
- Superb Potential to Create Modern Open-plan Living Space
- Main Bedroom with En-suite and Versatile Dressing Area - Some Updating Required
- Ample Parking On Private Driveway and Single Garage
- Virtual Tour Available Upon Request
- Well-Proportioned Double Aspect Lounge with Bay Window and Patio Doors
- Sun-filled Conservatory Perfect for Garden Room Transformation
- Established South-facing Garden Awaiting Your Personal Touch
- Charming Riverside Village, Close to Amenities
- EPC Rating: C/69



Total Area: 124.4 m² ... 1339 ft² (excluding conservatory, garage)

All measurements are approximate and for display purposes only

Village life reinvented! This detached bungalow in sought-after Hemingford Grey offers incredible potential to create your dream modern home. Ready for contemporary transformation, it features a kitchen with scope for open-plan living, spacious double-aspect lounge, and a conservatory perfect for conversion to a luxury garden room. Two double bedrooms (main with en-suite), plus a versatile dressing room ideal for conversion to a third bedroom - making this adaptable for modern family living. The peaceful cul-de-sac setting and south-facing garden

provide the perfect canvas for outdoor redesign, while the location offers the best of village life with riverside walks, local amenities, and easy access to St Ives and Cambridge. Could this be your perfect renovation project?