



CHRIS DURRANT

POWERED BY
exp™
UK

@ chris.durrant@exp.uk.com

chrisdurrant.exp.uk.com

📞 07595 473 891

Harlow Crescent, Oxley Park, Milton Keynes, MK4 4EP

£220,000

🛏 2 🚿 2 🚗 1

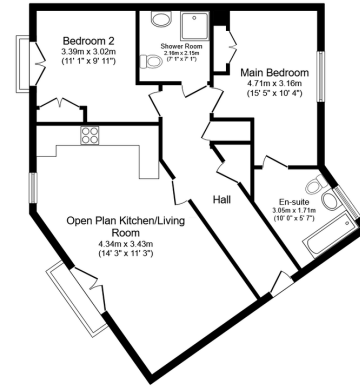
- No upward chain
- Two double bedroom apartment
- Spacious En suite to master bedroom
- Juliet balcony with views over park
- Garage
- Close to good schools and amenities
- Recently decorated throughout
- Wooden flooring
- For all enquiries please quote CD0104



Being sold with no upward chain is this very well presented, two double bedroom apartment overlooking a park in Oxley Park. The owner has recently redecorated this home throughout so is beautifully presented and ready for the next homeowners to just move in. Comprising entrance hall with storage cupboards, open plan living/kitchen/dining space with views over the park, kitchen with integrated appliances and granite work surface, superb master bedroom with built in double wardrobe and a large en suite, bedroom two the built in double wardrobe, shower room and a garage.

For all enquiries please quote C0104





Floor Plan

Floor area 78.4 m² (844 sq.ft.)

TOTAL: 78.4 m² (844 sq.ft.)

This floor plan is for illustrative purposes only. It is not drawn to scale. Any measurements, floor areas (including any total floor area), openings and orientations are approximate. No details are guaranteed, they cannot be relied upon for any purpose and do not form any part of any agreement. No liability is taken for any error, omission or misstatement. A party must rely upon its own inspection(s). Powered by www.Propertybox.io



Energy performance certificate (EPC)

131, Havelock Crescent
Oddy Park
MILDENHAYNES
MK43 4EP

Energy rating
B

Valid until: 23 April 2029

Certificate number: 0257-2894-6947-8421-2221

Property type

Mid-floor flat

Total floor area

74 square metres

Rules on letting this property

Properties can be let if they have an energy rating from A to E.

You can read [guidance for landlords on the regulations and exemptions](https://www.gov.uk/guidance/domestic-private-rented-property-minimum-energy-efficiency-standards-guidance) <https://www.gov.uk/guidance/domestic-private-rented-property-minimum-energy-efficiency-standards-guidance>

Energy rating and score

This property's energy rating is B. It has the potential to be B.

See how to [improve this property's energy efficiency](#).

Score

Energy rating

92+

A

81-91

B

69-80

C

55-68

D

39-54

E

21-38

F

1-20

G

Current

Potential

81 B

80 B

For properties in England and Wales:
the average energy rating is D
the average energy score is 60

eXp World UK Ltd is a registered company at Level 37, 25 Canada Square, London, E14 5LQ.

Registered company number is 12016573. VAT Registration Number is 327 4120 29