

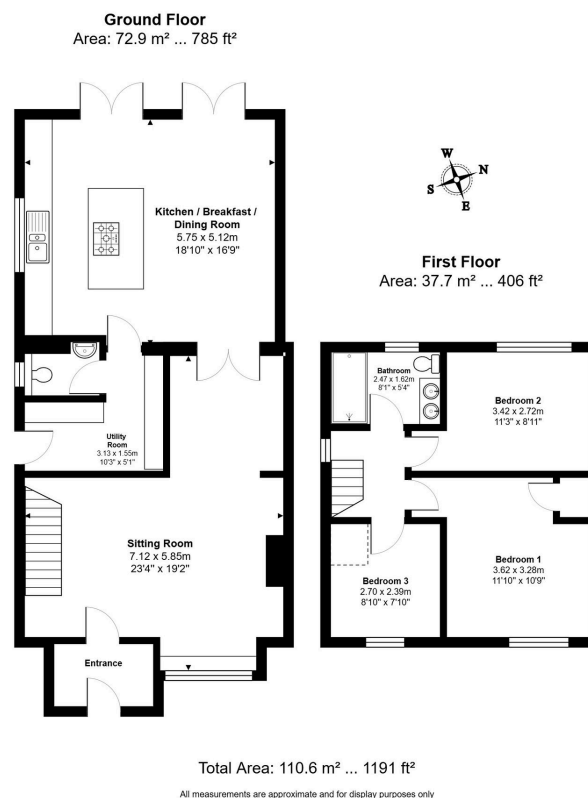
## Harris Crescent, Needingworth, PE27 4TE

Offers Over £325,000

3 1 1



- Extended and Upgraded Three Bedroom Semi Detached Home
- Separate Utility And Convenient Downstairs Cloakroom
- West Facing Rear Garden With Shed
- Village Location Close To Amenities And Local Primary School
- Virtual Tour Available Upon Request
- Re-fitted Kitchen/Diner/Family Room Spanning The Rear Of The Property
- Modernised And Improved Throughout By Current Owners
- Good Sized Block Paved Driveway Providing Ample Parking
- Good Access Links To St Ives And The Guided Busway To Cambridge
- EPC Rating: D/63



Stylish three-bed semi in Needingworth, fully upgraded with a stunning kitchen/diner, quartz worktops, utility, and cloakroom. West-facing garden with a powered shed, plus a large driveway. Great village location with shops, pubs, school, and riverside walks, plus easy access to St Ives and Cambridge!