

2 Elm Park Close, Houghton Regis

Guide Price £270,000

3 1 2



- Three Bedrooms
- No Chain
- Separate Lounge & Dining Room
- Ground Floor Cloakroom
- Gas Central Heating
- uPVC Double Glazing
- In Excess of 1000 Sq Ft
- Garage In Block
- Superbly Positioned For Access To J 11 a of M1
- Please quote reference MS0216

Approximate Gross Internal Area
 Ground Floor = 45.7 sq m / 492 sq ft
 First Floor = 39.8 sq m / 428 sq ft
 Garage & External Cupboard = 12.5 sq m / 134 sq ft
 Total = 98.0 sq m / 1,054 sq ft

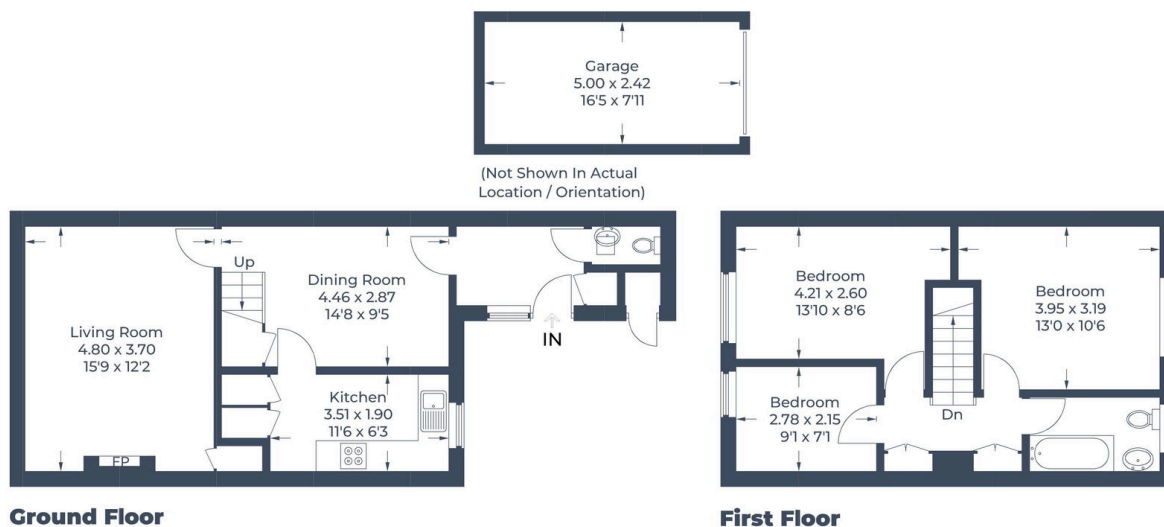


Illustration for identification purposes only,
 measurements are approximate, not to scale.
 © C3 Property Marketing Produced for EXP

A well presented three bedroom end of terrace family home situated within a Cul-de-Sac in Houghton Regis.

Entrance hall, ground floor cloakroom, dining room, kitchen, living room, landing, three bedrooms, family bathroom front & rear gardens, uPVC double glazing, gas central heating & garage en-bloc.

Available with no upper chain.

Please quote reference MS0216