

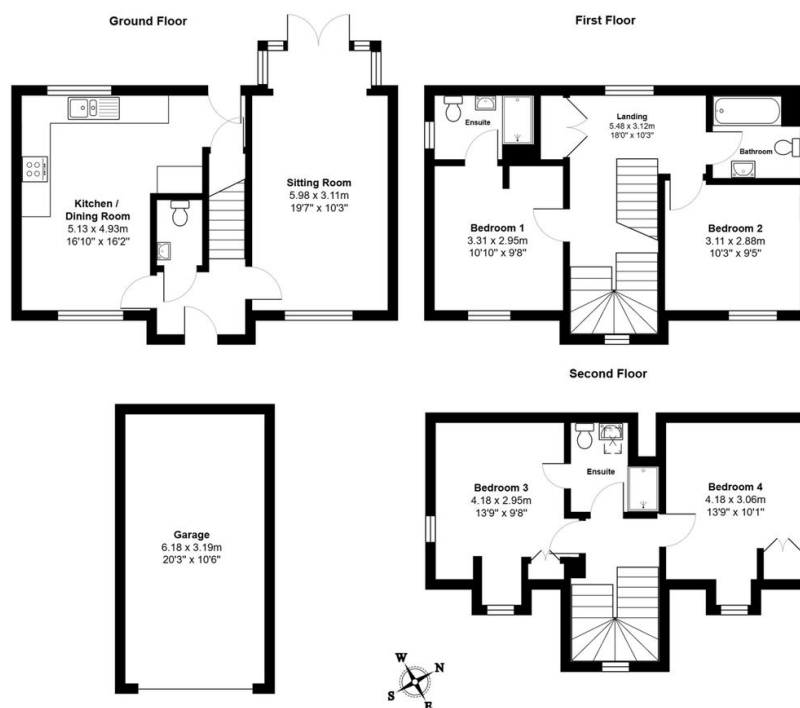
Knights Way, St. Ives, PE27 6TB

Guide Price £475,000

4 beds 4 baths 1 garage



- Stunning Four Bed Detached Home With Accommodation Over Three Floors
- Convenient Ground Floor WC
- Two Bedrooms Benefit from En-suite Facilities
- Modern Home With Up To Date Fittings Still Under Builder Warrantee
- Virtual Tour Available Upon Request
- Double Aspect Living Room With Direct Garden Access
- Four Well-proportioned Double Bedrooms
- Well Presented Through-Out
- Schools and Leisure Facilities Within Walking Distance
- EPC Rating: B/83



Total Area: 121.7 m² ... 1310 ft² (excluding garage)
 All measurements are approximate and for display purposes only

Dream Family Find! This stunning four-bed detached, in St Ives offers modern living with its flowing spaces, including a fabulous kitchen/diner, four double bedrooms and two en-suite bathrooms! could this be your perfect next move?