

15 Oldham Rise, Medbourne

£220,000

🛏️ 2 🚿 1 🚗 1



A 2 bedroom 1st floor apartment, boasting open plan accommodation, family bathroom, allocated parking & communal garden.

M: 07970663757

E: martin.drew@exp.uk.com

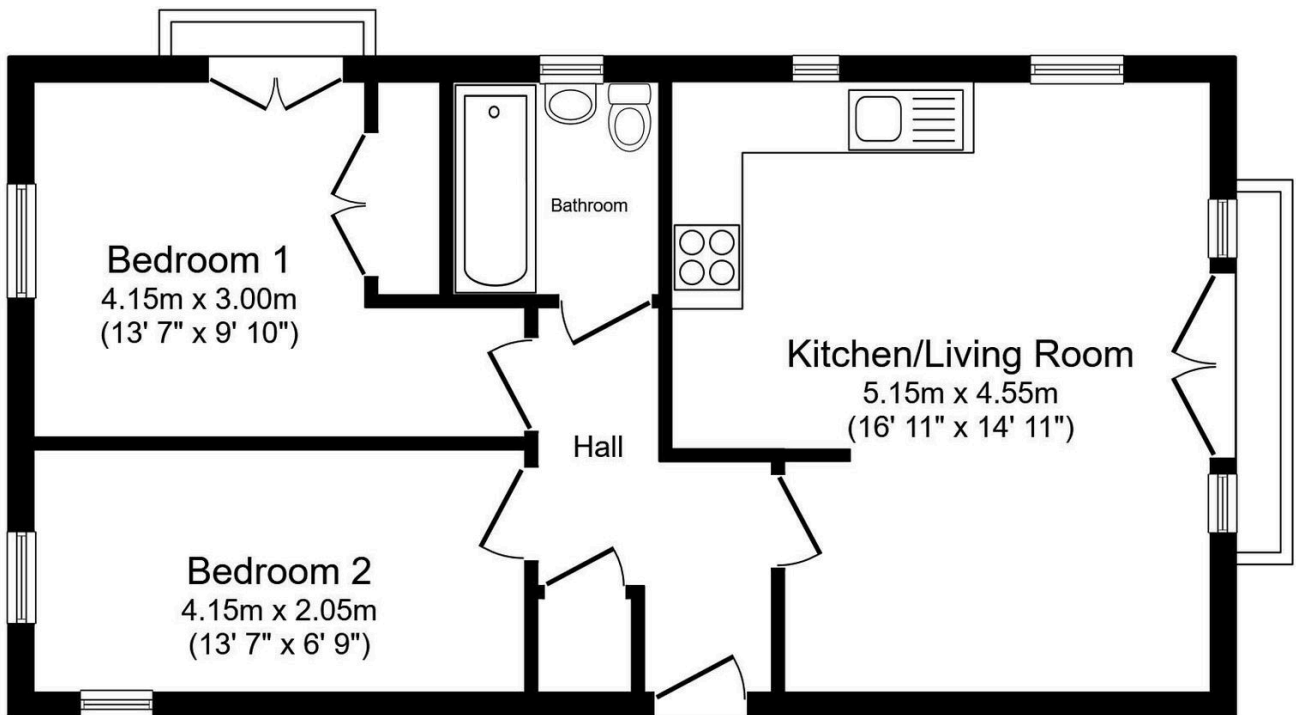
W: www.martin.drew.exp.uk.com



MARTIN DREW

POWERED BY
exp® UK

- 2 bedrooms
- open plan living
- bathroom
- allocated parking
-
- kitchen
- inner hallway
- communal garden
-
-



Total floor area 51.1 m² (550 sq.ft.) approx

M: 07970663757

E: martin.drew@exp.uk.com

W: www.martin.drew.exp.uk.com

