

Owl Way, Hartford, Huntingdon, PE29 1YZ

Guide Price £515,000

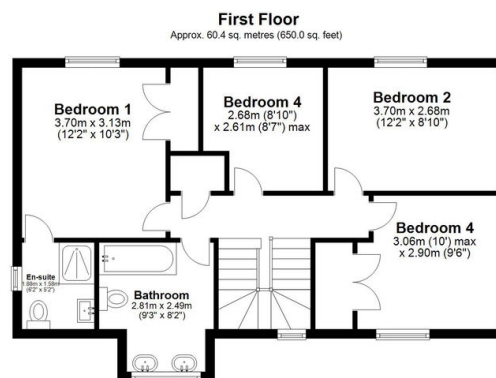
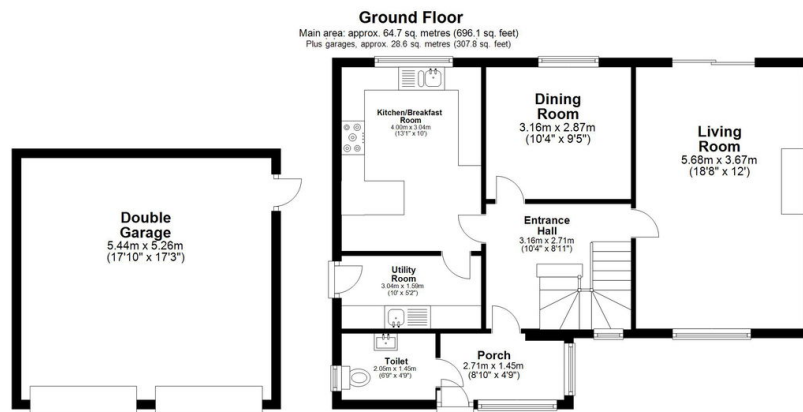
4 3 2



An executive detached home, with four bedrooms in the highly sought after location of Hartford.

Key Features

- Detached Property
- Kitchen/Breakfast Room And Separate Dining Room
- Re-fitted Downstairs Cloakroom
- Double Garage And Driveway
- Virtual Tour Available Upon Request
- Four Bedrooms
- En-suite To Main Bedroom
- Well Maintained Gardens
- Desirable Location Close To Amenities
- EPC Rating: D/57



Main area: Approx. 125.1 sq. metres (1346.2 sq. feet)
Plus garages, approx. 28.6 sq. metres (307.8 sq. feet)

Floor Plan measurements are approximate and are illustrative purposes only. While we do not doubt the floor plan accuracy, we make no guarantee, warranty or representation as to the accuracy and completeness of the floor plan.
Plan produced using PlanUp.