

## The Brambles Limes Park Road, St. Ives, PE27 5NJ

Offers Over £150,000

🛏 2 🚗 1 🚗 1

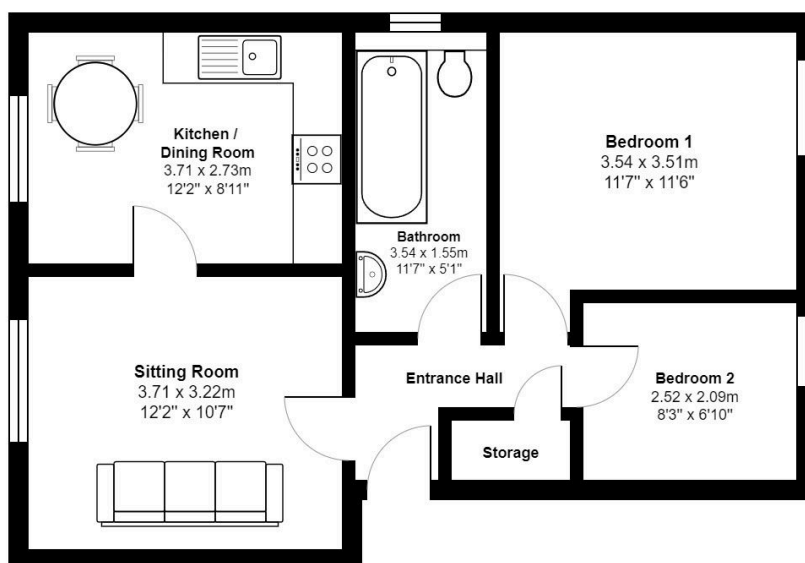


A two bedroom, ground floor apartment, south of the river in St. Ives.

## Key Features

- Ground Floor Apartment
- Kitchen/breakfast Room
- Allocated Parking
- Close To St. Ives Town Centre
- Virtual Tour Available Upon Request
- Two Bedrooms
- Sought After Location South Of St. Ives
- Situated On The Edge Of Picturesque Countryside
- Convenient Access To Cambridge Via Road Or The Guided Busway
- EPC Rating: D/55

### Ground Floor



Total Area: 51.1 m<sup>2</sup> ... 550 ft<sup>2</sup>

All measurements are approximate and for display purposes only