

HANNAH CARR

POWERED BY
exp UK



4 Spires End

Alconbury Weston, Huntingdon, PE28 4JJ

FREEHOLD

Description

This beautifully presented home, designed by Potton, is true to the prestigious brand in offering spacious, versatile living areas and character features throughout. Set on a private road of just 4 individually built properties, it benefits from a large plot of a quarter of an acre.

Downstairs, there are two large reception rooms, one of which could also be used as a generous fourth bedroom. The larger, 23 foot long, reception room boasts a lovely office space and an inglenook feature fireplace that these homes are so well known for. Currently used as an entertainment area, it could easily be reinstated. The kitchen/diner also offers a great space for the family to congregate while you create your next dinner masterpiece! From here there is a separate utility room which leads to the garden.

Upstairs, there is plenty of built in storage and three double bedrooms. The impressive master suite boasts a walk-in wardrobe and ensuite.

The property sits in the middle of its generous plot and enjoys a leafy outlook to the front and rear. The rear garden is a relaxing, sunny space to enjoy and potter, and the addition of a summer house which has lighting and electricity offers a separate studio/ office space - a must for a busy family! The front garden gives this lovely home a welcoming entrance and privacy. To top it off there is a private driveway for ample parking and a large double garage, offering scope for potential annexe accommodation, subject to planning etc.

Alconbury Weston is a historic village located a little north west of Huntingdon and offers an excellent local pub and a friendly community. The brook running through the village gives it a picturesque feel and attracts wonderful water birds and wildlife.

The nearby neighbouring village of Alconbury also offers further amenities including a good local primary school, a doctor's surgery and a shop. Both villages are also well served by a wealth of services from local independent businesses. The school bus is also available from the village to Hinchbrook Academy.

The village is located within easy access onto the A1 and A14, and you can catch regular, fast trains into London Kings Cross from Huntingdon Station (7.4 miles).

Useful Information

Gigaclear high speed internet is available in the village

Features

- ✓ Three/Four Bedroom Detached Home
- ✓ Summer House / Garden Room
- ✓ Private Drive and Double Garage
- ✓ Generous Enclosed Rear Garden
- ✓ Excellent Road and Transport Links

To request a viewing please get in touch:



01480 597 799



hannah.carr@exp.uk.com

www.hannahcarr.exp.uk.com

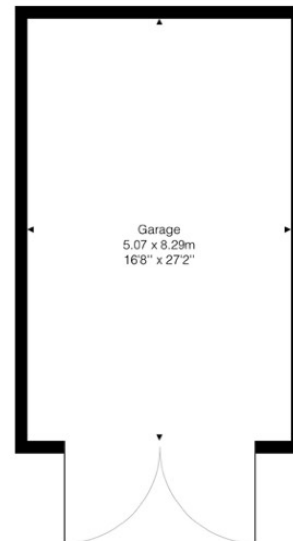
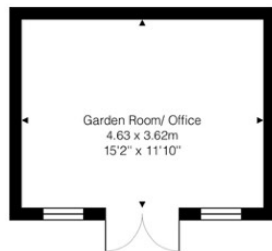
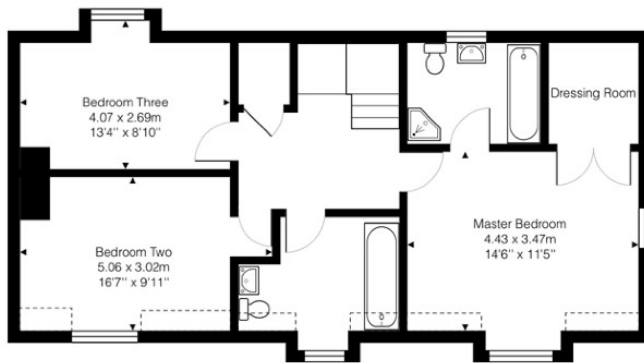
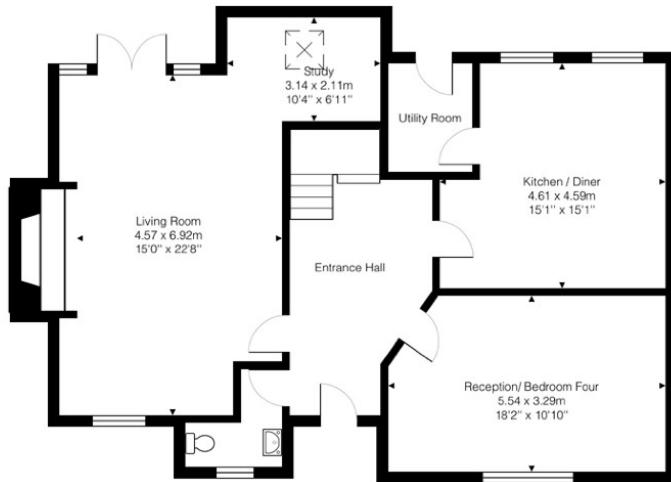












Total Area: 227.2 m² ... 2445 ft²

Score	Energy rating	Current	Potential
92+	A		
81-91	B		83 B
69-80	C		
55-68	D	65 D	
39-54	E		
21-38	F		
1-20	G		