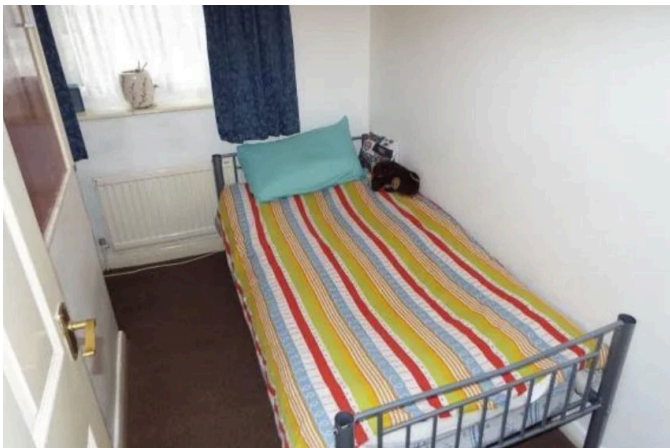


12 Swallow Close

Guide Price £285,000

3 1 1



- Three Bedrooms
- No Chain
- uPVC Double Glazing
- Close To Junction 11a Of The M1
- Estimated Rental Value of £1450 PCM
- Planning Permission In Place For Side Extension
- Gas Central Heating
- Off Road Parking
- Cul-de-Sac Location
- Please quote reference MS0216



A well presented, three bedroom semi-detached family home set within a quiet Cul-de-Sac in the popular 'Birds' Estate on the Luton & Dunstable borders.

Please quote reference MS0216