

Pound Road, Hemingford Grey, Huntingdon, PE28 9EA

Offers Over £450,000

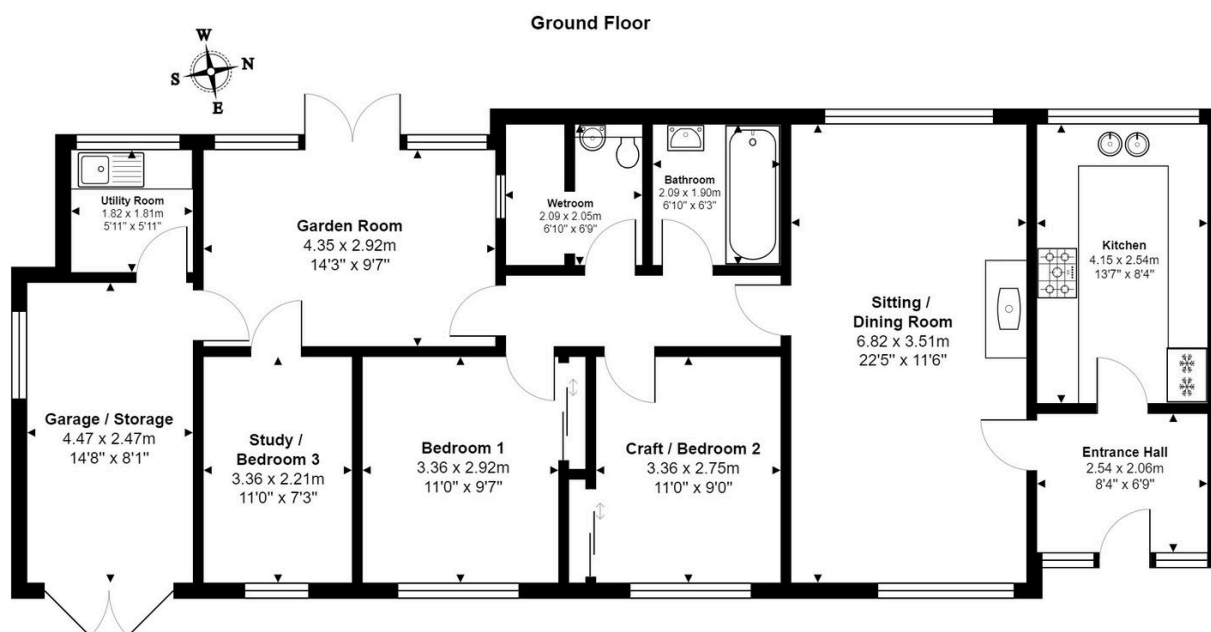
3 2 2



A Semi-detached bungalow on a generous plot in the heart of Hemingford Grey.

Key Features

- Semi Detached Bungalow
- Three Bedrooms
- Generous Plot
- Well Presented Throughout
- Approved Planning Permission For Further Extension
- Walking Distance To Village Shop
- Garage/storage And Driveways With Ample Off-Road Parking
- Near To Bus Stop
- Virtual Tour Available Upon Request
- EPC Rating: D/66



Total Area: 102.8 m² ... 1106 ft² (excluding garage / storage)

All measurements are approximate and for display purposes only