



ANITA SANFORD

exp[®] UK

@anita.sanford@exp.uk.com

anitanford.exp.uk.com

07702 259 092

Winslow, 6 Boot Close,
£450,000

3 2 1

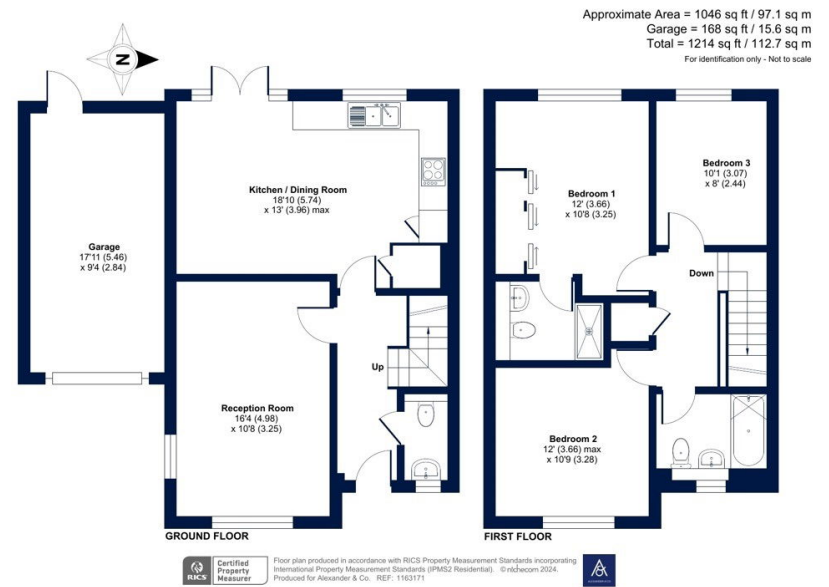


- Semi detached house on sought after development
- Open plan Kitchen Breakfast room
- Finished to the highest quality
- Single garage and off street parking
- Walking distance to Winslow market square
- Three bedrooms and two bathrooms
- Downstairs cloakroom
- Premier Warranty
- Lawned garden
- Vacant possession





An attractive three bedroom semi detached house with a garage on a highly sought after development in the market town of Winslow



Energy performance certificate (EPC)

6 Boat Close WINSLOW MK18 3GA	Energy rating B	Valid until: 21 November 2032
Property type Semi-detached house		Certificate number: 2952-4339-6469-1192-2226
Total floor area 98 square metres		

Rules on letting this property

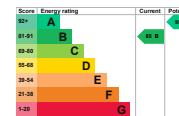
Properties can be let if they have an energy rating from A to E.

You can read [guidance for landlords on the regulations and exemptions](https://www.gov.uk/guidance/domestic-private-rented-property-minimum-energy-efficiency-standard-landlord-guidance) (<https://www.gov.uk/guidance/domestic-private-rented-property-minimum-energy-efficiency-standard-landlord-guidance>).

Energy rating and score

This property's energy rating is B. It has the potential to be A.

[See how to improve this property's energy efficiency.](#)



The graph shows this property's current and potential energy rating.

Properties get a rating from A (best) to G (worst) and a score. The better the rating and score, the lower your energy bills are likely to be.

For properties in England and Wales:
 the average energy rating is D
 the average energy score is 60