



DOMINIC BRUNEAU POWERED BY **exp** TM UK

@ dominic.bruneau@exp.uk.com

🌐 dominicbruneau.exp.uk.com

☎ 07590 227 225

Bridgewood Road, Worcester Park, KT4 8XP

Offers Over £600,000

🛏️ 3 🚗 1 🛋️ 2

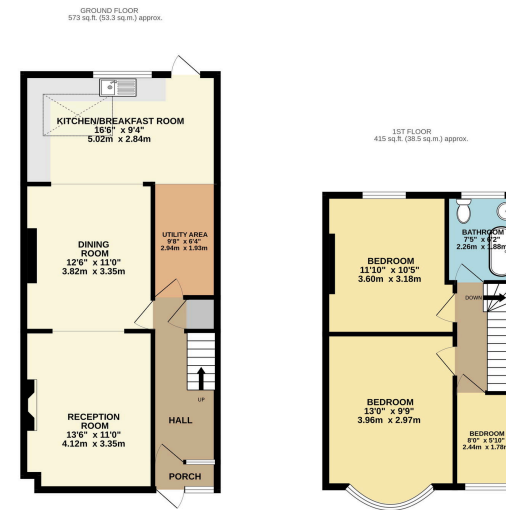
- Three Bedroom Family Home • Open Living/Dining Room
- Utility Room • Extended Kitchen
- Modern Bathroom • Off Street Parking (2 Cars)
- East Facing Rear Garden • Backs on to Tennis Courts
- No Forward Chain • 0.5 miles for High Street



An extended three bedroom family home in a sought after residential road ideal for young families The property provides superb living space with a well planned modern kitchen that opens onto & overlooks an approximately 65ft rear garden with space for a home office or summer house, backing on to tennis courts and a park. There is a utility area that complements the open plan living and dining areas. Two double bedrooms and a well proportioned single bedroom & a modern bathroom suite are on the first floor.

There is off street parking for 2 cars. This home is conveniently located within 0.5 M of Worcester Park High Street with it's vast array of shops and cafes. The BR station is also within approximately 0.75 miles, connects to London Waterloo. Within approx. 1 mile is the A3 which links London, the South Coast & the M25 making this an ideal for commuters and families with local parks, leisure facilities and clubs. There is rear vehicular access.





Score	Energy rating	Current	Potential
92+	A		
81-91	B		85 B
69-80	C	69 C	
55-68	D		
39-54	E		
21-38	F		
1-20	G		

eXp World UK Ltd is a registered company at Level 37, 25 Canada Square, London, E14 5LQ.
 Registered company number is 12016573. VAT Registration Number is 327 4120 29