



JON-PAUL BRAMPTON POWERED BY **exp** TM UK

@jon-paul.brampton@exp.uk.com

jonpaulbrampton.exp.uk.com

07359 015 020

The Old Chapel, Ivinghoe, Buckinghamshire

Offers Over £475,000

3 2 1

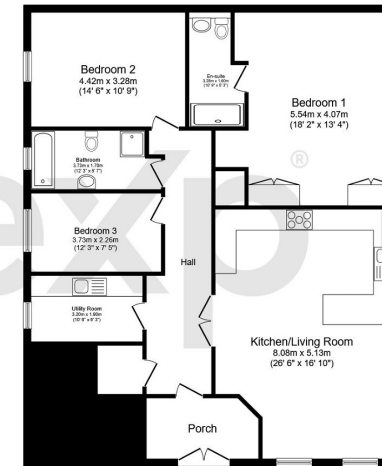


- Chapel conversion built in 1865
- Converted in 2015/ EPC rating B
- Stylish Kitchen/diner
- Ivinghoe village location
- Separate utility room
- Three bedroom ground floor apartment
- Underfloor heating
- Period features and high ceilings
- Area of Outstanding Natural Beauty, close to Ivinghoe Beacon and the Ashridge Estate
- Main bedroom and ensuite





Jon-Paul Brampton presents... 'The Old Chapel' in idyllic Ivinghoe; An impeccable three bedroom ground floor apartment forming part of a former Chapel built in 1865.



Total floor area 133.0 sq.m. (1,432 sq.ft.) approx

This plan is for illustration purposes only and may not be representative of the property. Plan not to scale. Powered by PropertyBox

Energy performance certificate (EPC)

55a, High Street Ivinghoe LEICESTERSHIRE LU7 9EP	Energy rating B	Valid until: 10 January 2028 Certificate number: 8556-7639-4970-7169-8992
---	---------------------------	--

Property type: Ground-floor flat
Total floor area: 129 square metres

Rules on letting this property

Properties can be let if they have an energy rating from A to E.

You can read [guidance for landlords on the regulations and exemptions \(https://www.gov.uk/guidance/domestic-private-rented-property-minimum-energy-efficiency-standard-landlord-guidance\)](https://www.gov.uk/guidance/domestic-private-rented-property-minimum-energy-efficiency-standard-landlord-guidance).

Energy rating and score

This property's current energy rating is B. It has the potential to be B.

[See how to improve this property's energy efficiency.](#)

Score	Energy rating	Current	Potential
92+	A		
81-91	B	81 B	81 B
69-80	C		
55-68	D		
39-54	E		
21-38	F		
1-20	G		

The graph shows this property's current and potential energy rating.

Properties get a rating from A (best) to G (worst) and a score. The better the rating and score, the lower your energy bills are likely to be.

For properties in England and Wales:
the average energy rating is D
the average energy score is 60